

Light Guiding and Tunneling, nanowire fabrication

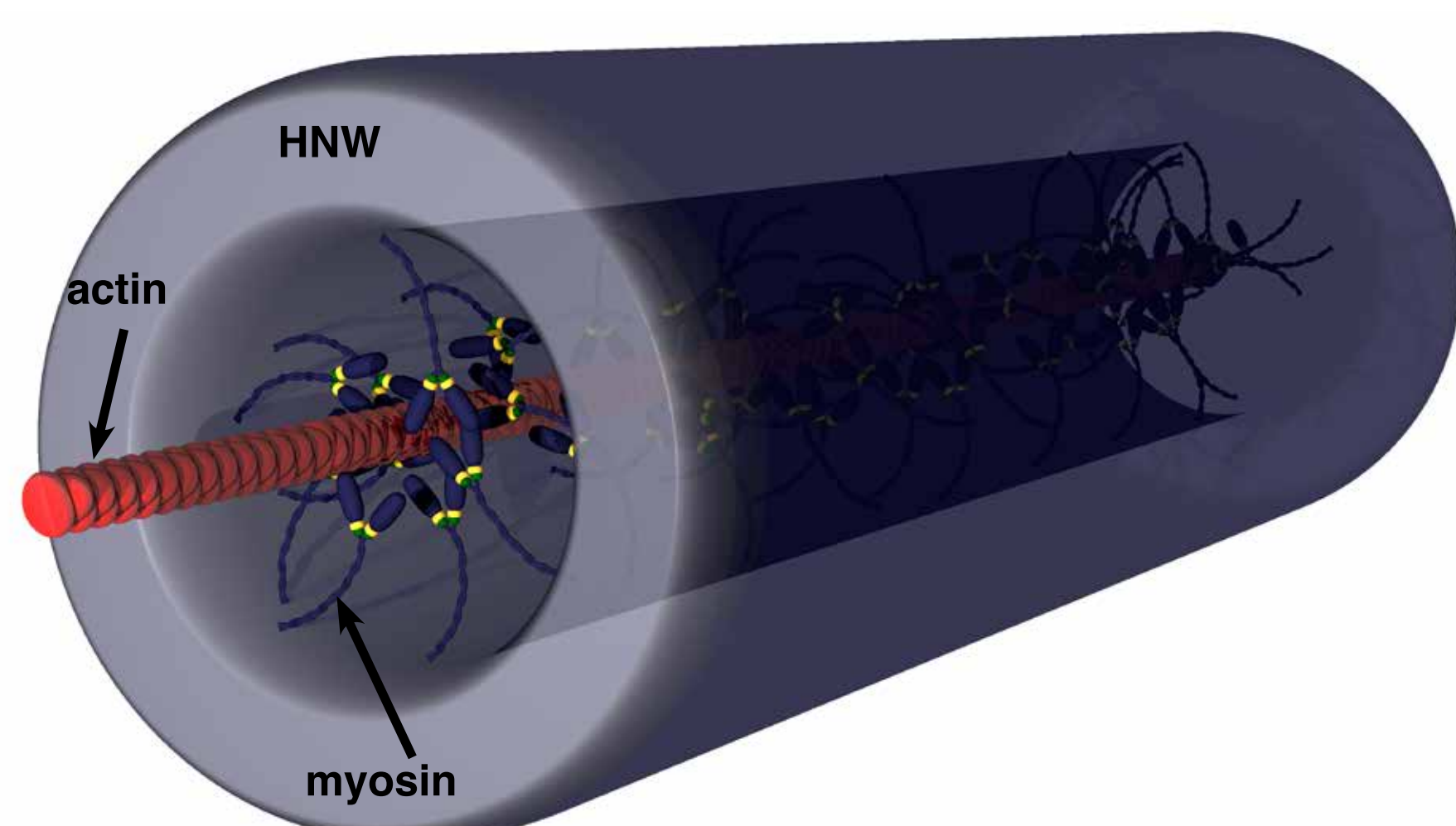
MERCY LARD^{1,2}, ALF MÅNSSON³, ANDERS MIKKELSEN^{1,4}, HEINER LINKE^{1,2}

1. NanoLund, Lund University, Sweden, 2. Solid State Physics, Lund University, Sweden,
3. Department of Chemistry and Biomedical Sciences, Linnaeus University, Kalmar, Sweden, 4. Synchrotron Radiation Research, Lund University, Sweden

Biomolecular motors offer directed transport, and can potentially replace pump-driven nanofluidics. However, in existing systems, transportation is limited to the two-dimensional plane. Here we demonstrate myosin-driven transport of actin filaments through hollow oxide nanotubes, with 80 nm inner diameters¹. We also show light guiding of labeled filaments moving vertically

along arrays of nanowires with 150–200 nm outer diameter and several micrometer lengths². These systems enable 3D actomyosin interaction, for example, in lab-on-a-chip systems useful for scaffolding in bottom-up assembly of muscle proteins into 3D ordered contractile units, mimicking the muscle sarcomere or in biosensing, respectively.

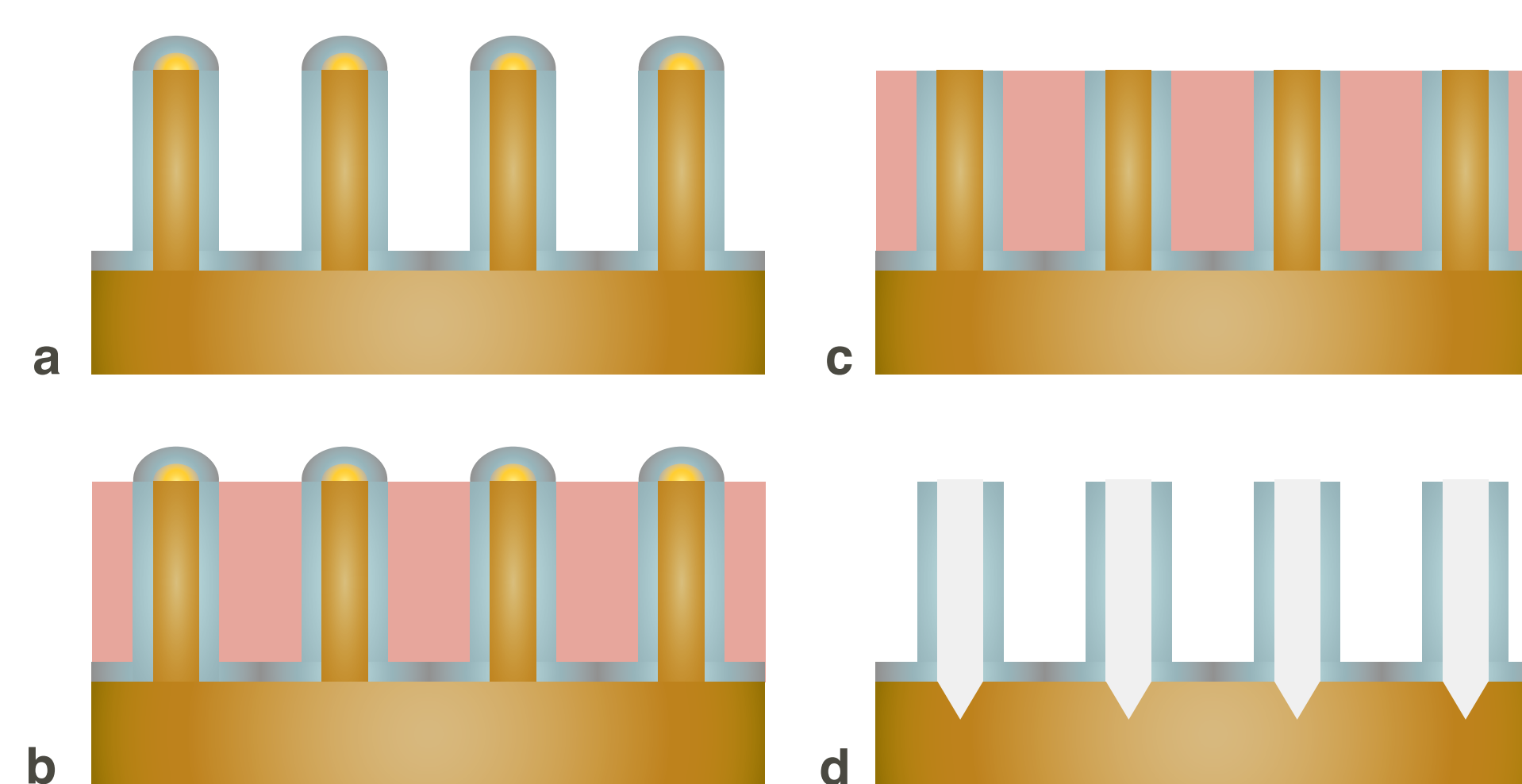
Transport of molecular motors



SCHEMATIC OF TRANSPORT

GaP nanowires are coated with 60 nm of Al₂O₃. The GaP core is etched away leaving behind HNWs (inner diameter 80 nm)³. Myosin molecules bound to the inner surface extending out about 40 nm⁴, transport actin filaments (diameter 10 nm) through the wire.

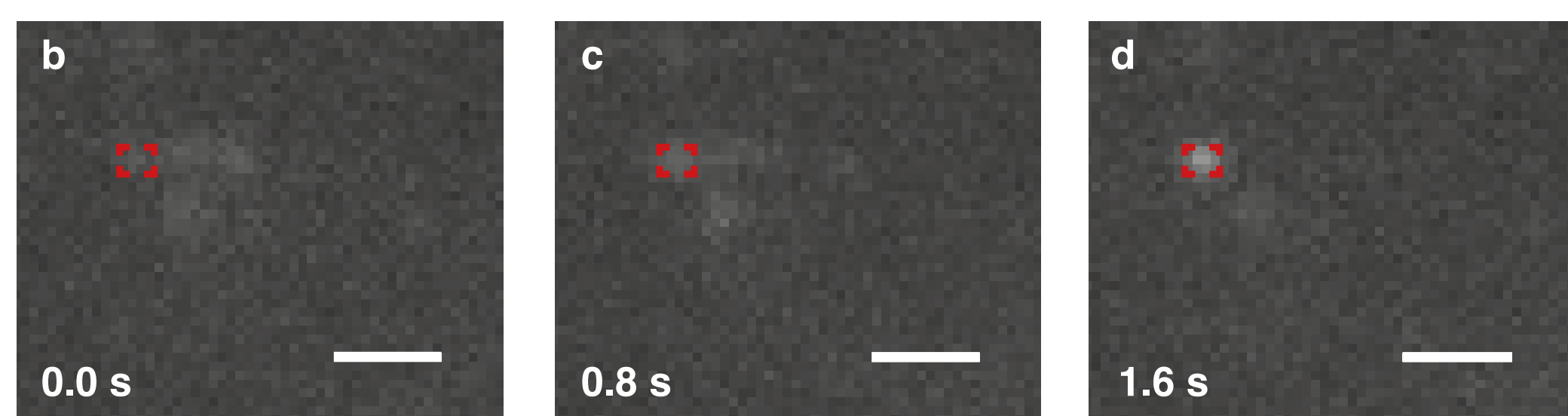
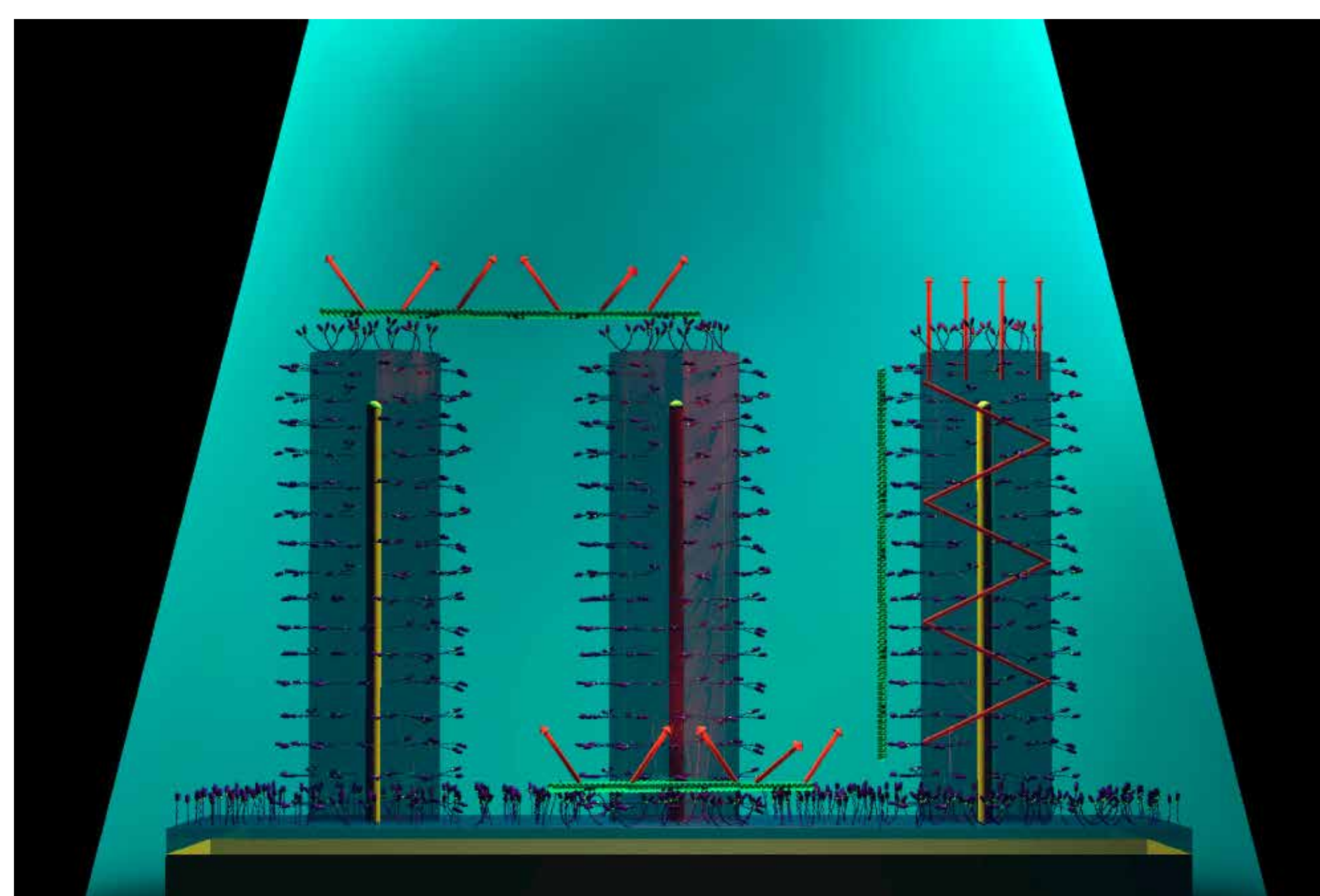
Hollow nanowire fabrication



HNW FABRICATION STEPS

a) GaP nanowires used as a template for deposition of the Al₂O₃ shell formed by atomic layer deposition. b) Coated nanowires embedded in resist tips exposed. c) Etching with argon plasma. d) Oxygen plasma etching removes resist, finally the GaP core is removed by wet etching.

Light guiding with nanowires

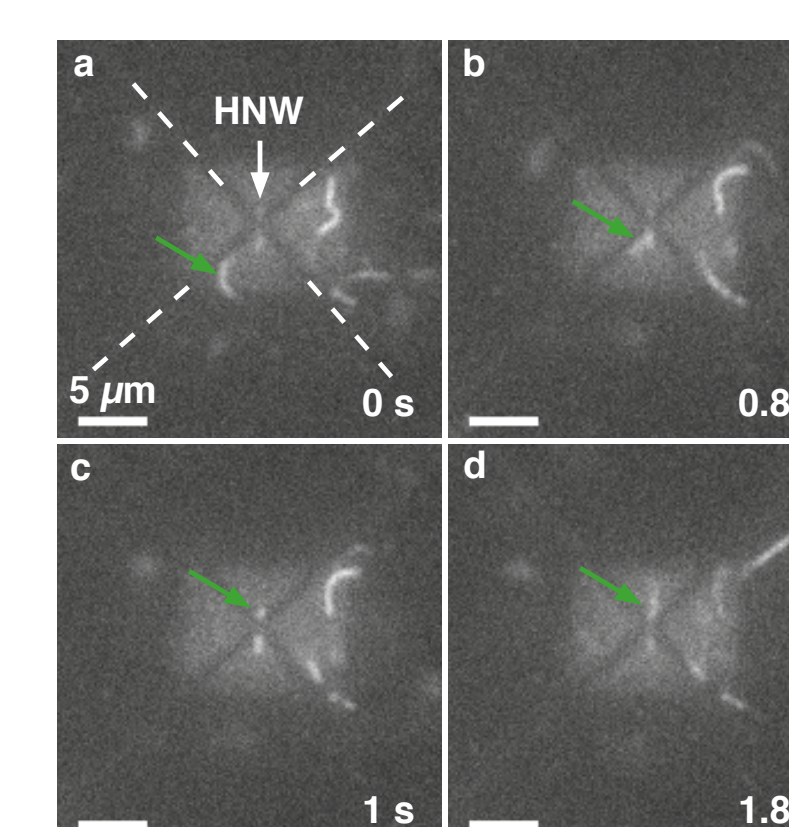


Light guiding schematic and results. a) Filaments can be transported horizontally above, vertically along nanowires and on the substrate. Light emitted from excited fluorophores on the filaments running vertically along wires is collectively emitted from the tips of the wires. b–d) Fluorescence micrographs of filament moving down a single wire (red dashed line). Scale bars: 2 μm.

1D transport of actin filaments

MOTILITY THROUGH HOLLOW NANOWIRE

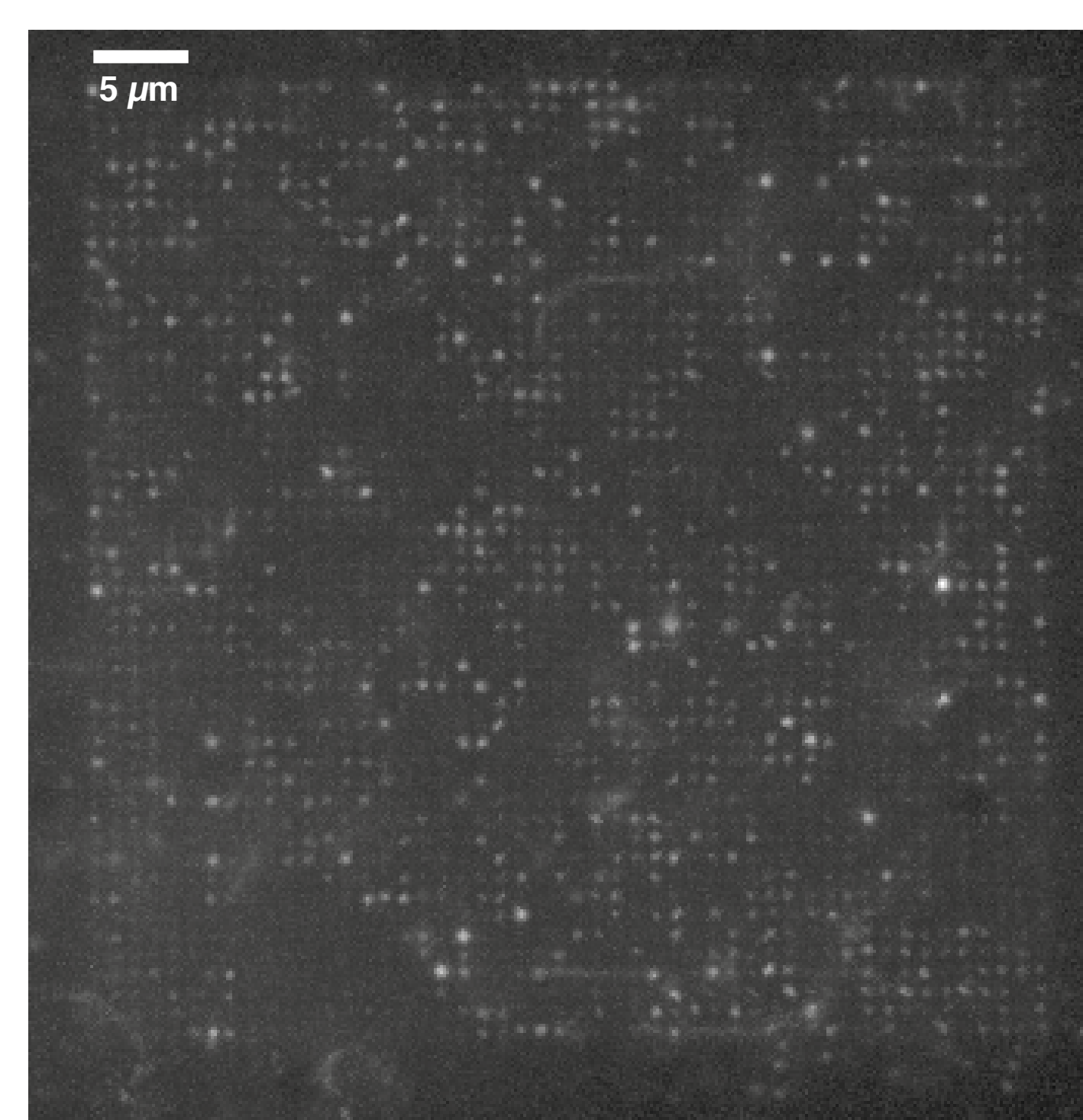
a–d) show fluorescence micrographs of filament (3.14 μm long, green arrow) being transported through a HNW. Au lines are partially demarcated by dashed lines in (a). Scale bar: 5 μm. Filaments were seen to slow down during transport through the wires. Bright square region around the wire likely due to carbon residues left behind during SEM imaging.



Conclusions

- Demonstration of 1D guidance of filaments, with 3D enclosure using HNWs.
- Enhanced detection of filaments with light guiding on vertical nanowires.
- 3D transport of filaments on vertical nanowires.
- Both techniques are useful for studies on actomyosin interactions.

Lorem Ipsum



ACKNOWLEDGEMENTS

The work presented here was carried out in close collaboration with Linnaeus University in Kalmar, Sweden. All nanofabrication was carried out in Lund Nano Lab. We acknowledge financial support from the Swedish Research Council and from the European Union Seventh Framework Programme (FP7/2007–2011) under grant agreement n° 228971 (Molecular Motors-based Nano Devices – MONAD) and n° 613044 (ABACUS) and NanoLund.

REFERENCES

- 1) M. Lard, ten Siethoff, L., Generosi, J., Månsson, A., Linke, H., Nano Lett., 2014, 14(6).
- 2) L. ten Siethoff, Lard, M., Generosi, J., Andersson, H. S., Linke, H., Månsson, A., Nano Lett. 2014, 14(2).
- 3) H. Persson et al., Nano Res. 2012, 5(190).
- 4) M. Persson et al., Langmuir 2010, 26(12).

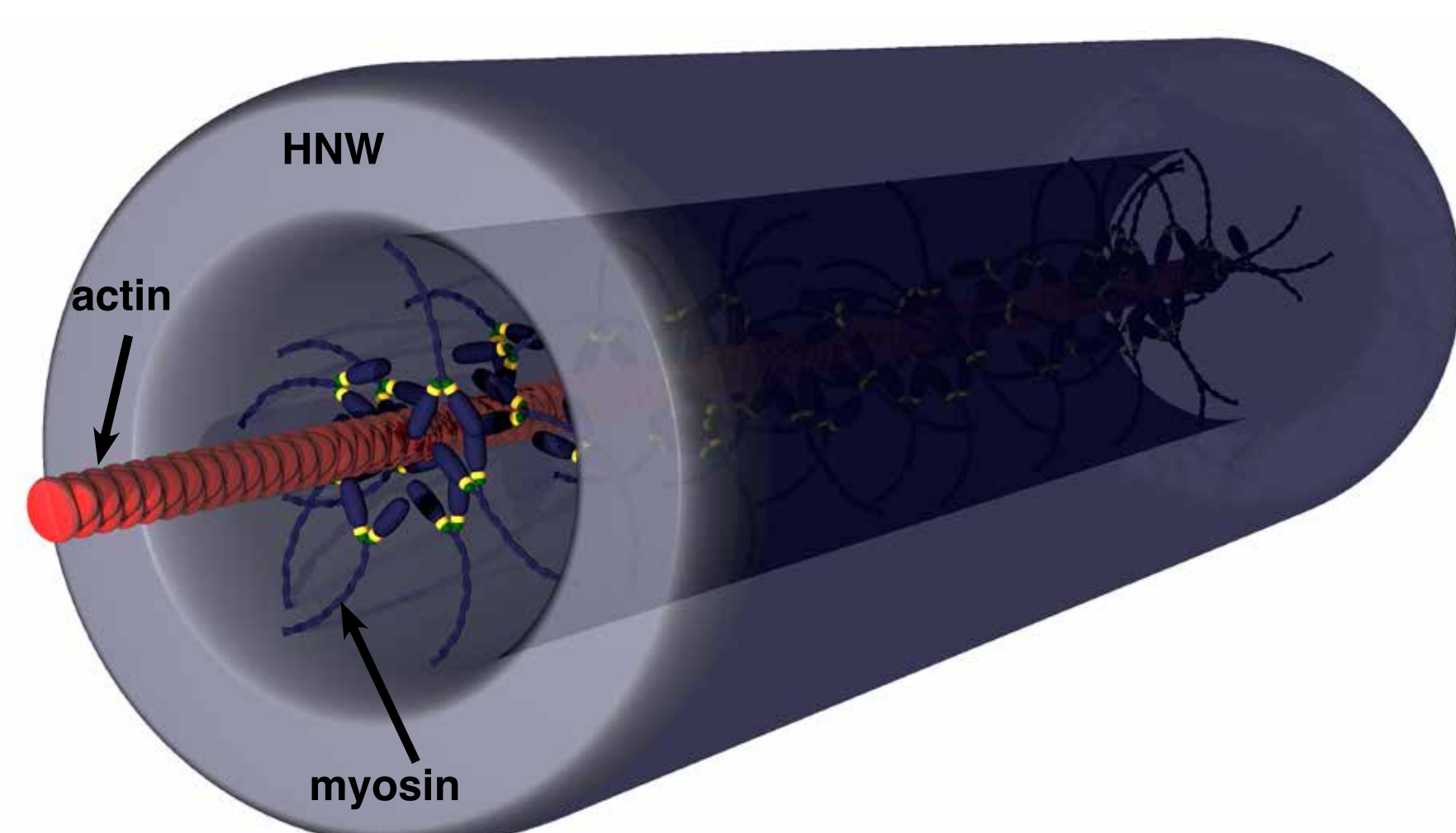
MERCY LARD^{1,2}, ALF MÅNSSON³, ANDERS MIKKELSEN^{1,4}, HEINER LINKE^{1,2}
VIVIANNE ANDERSEN^{1,2}, PILO MIKKELSEN^{1,4}, ALF FRÅNSSON³, HEINZ GINKEY^{1,2}, MERCY LARD^{1,2}

1. NanoLund, Lund University, Sweden, 2. Solid State Physics, Lund University, Sweden,
3. Department of Chemistry and Biomedical Sciences, Linnaeus University, Kalmar, Sweden, 4. Synchrotron Radiation Research, Lund University, Sweden

Biomolecular motors offer directed transport, and can potentially replace pump-driven nanofluidics. However, in existing systems, transportation is limited to the two-dimensional plane. Here we demonstrate myosin-driven transport of actin filaments through hollow oxide nanotubes, with 80 nm inner diameters¹. We also show light guiding of labeled filaments moving vertically

along arrays of nanowires with 150–200 nm outer diameter and several micrometer lengths². These systems enable 3D actomyosin interaction, for example, in lab-on-a-chip systems useful for scaffolding in bottom-up assembly of muscle proteins into 3D ordered contractile units, mimicking the muscle sarcomere or in biosensing, respectively.

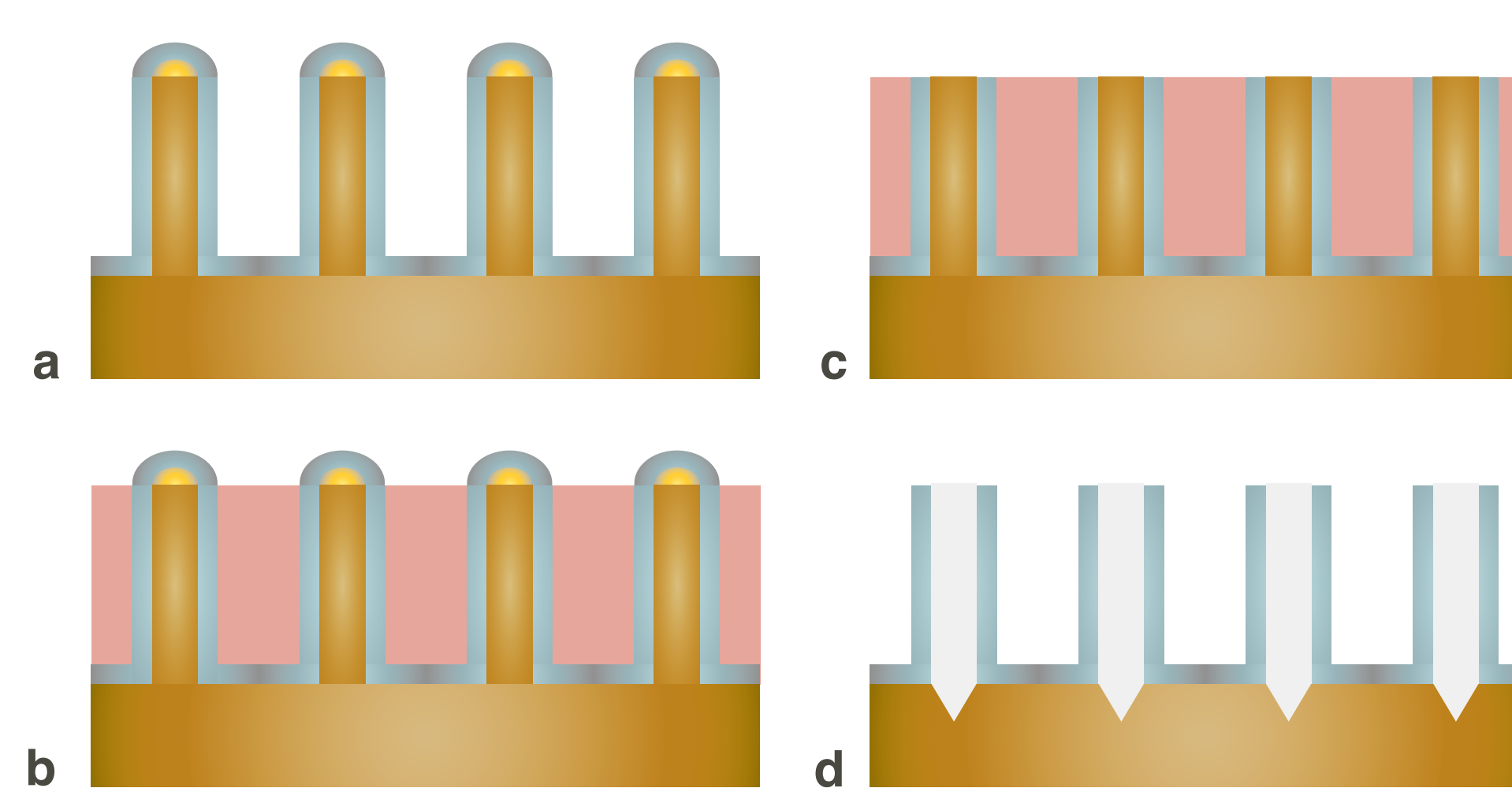
Transport of molecular motors



SCHEMATIC OF TRANSPORT

GaP nanowires are coated with 60 nm of Al₂O₃. The GaP core is etched away leaving behind HNWs (inner diameter 80 nm)³. Myosin molecules bound to the inner surface extending out about 40 nm⁴, transport actin filaments (diameter 10 nm) through the wire.

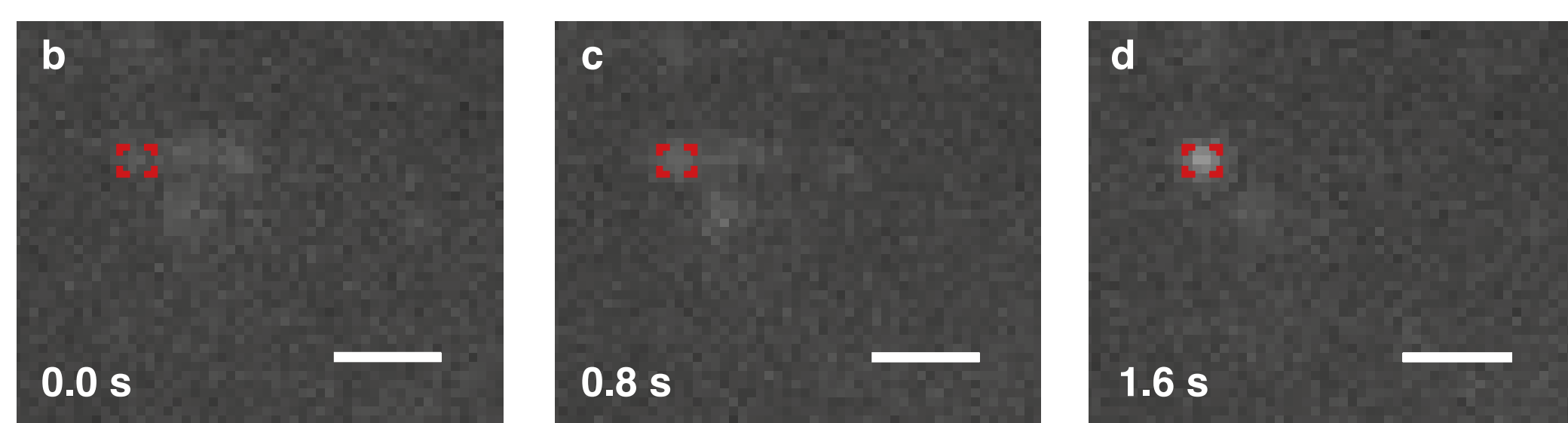
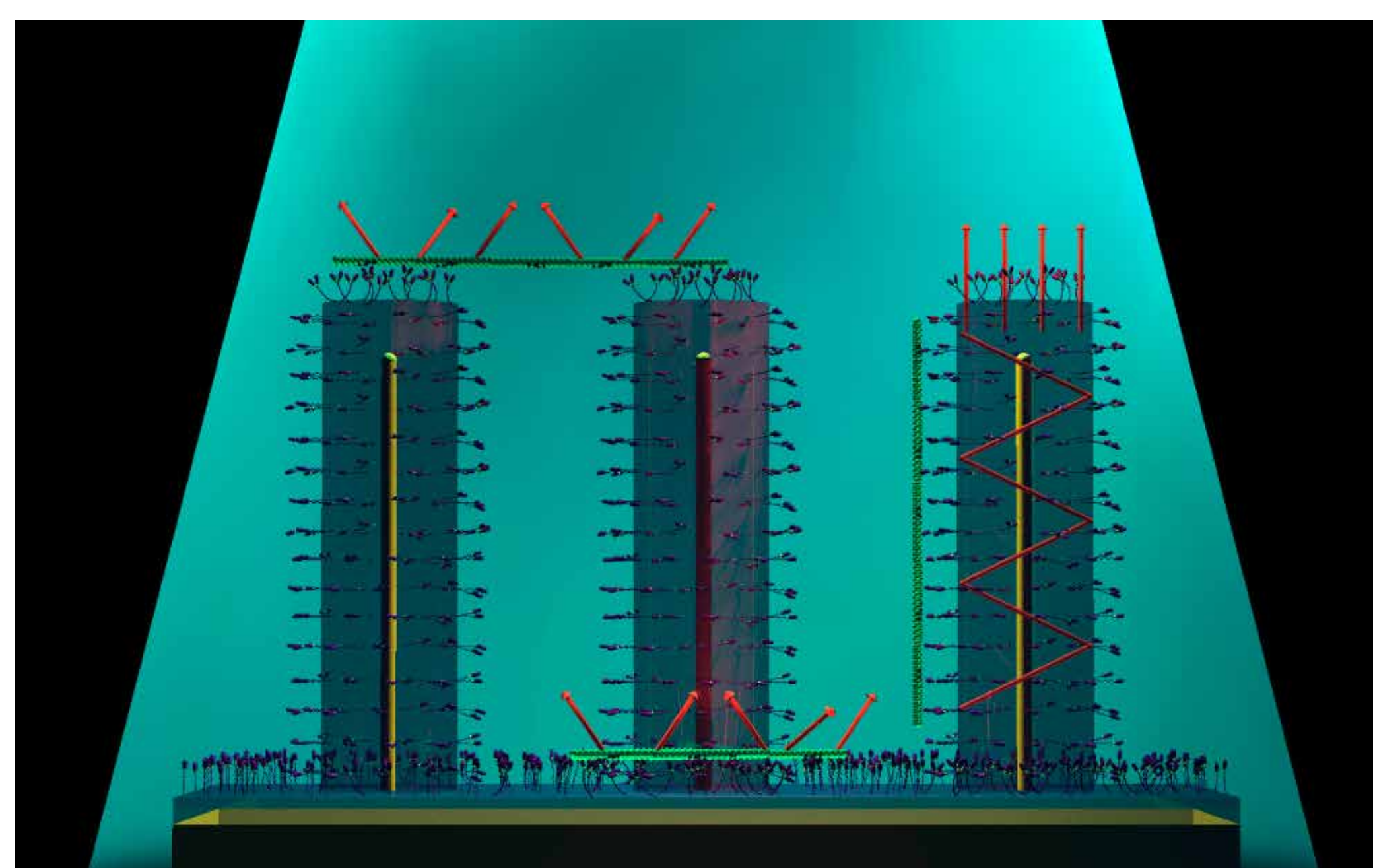
Hollow nanowire fabrication



HNW FABRICATION STEPS

a) GaP nanowires used as a template for deposition of the Al₂O₃ shell formed by atomic layer deposition. b) Coated nanowires embedded in resist tips exposed. c) Etching with argon plasma. d) Oxygen plasma etching removes resist, finally the GaP core is removed by wet etching.

Light guiding with nanowires

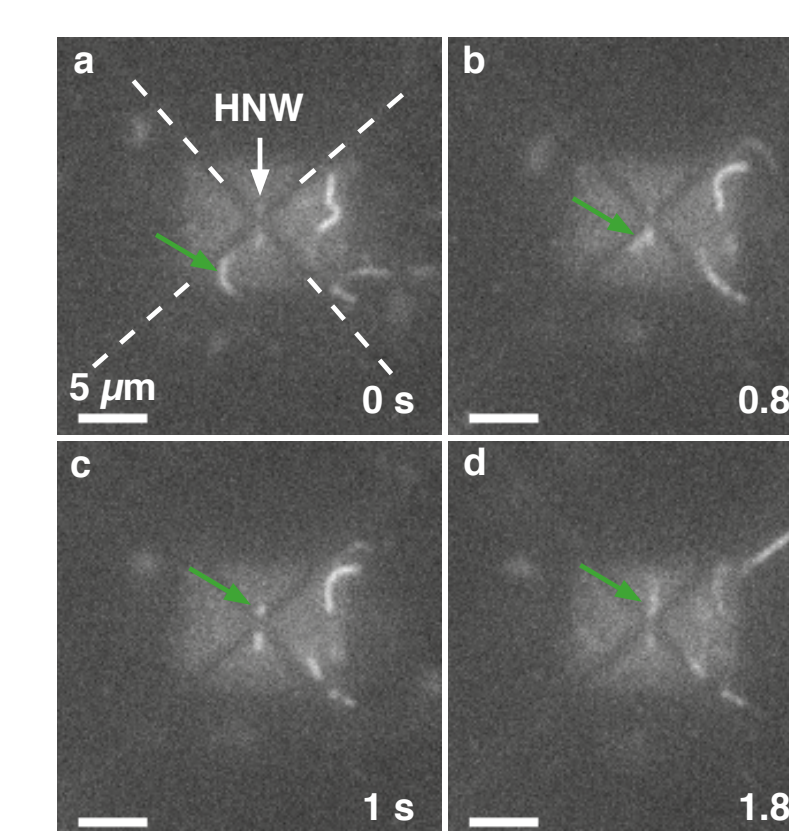


Light guiding schematic and results. a) Filaments can be transported horizontally above, vertically along nanowires and on the substrate. Light emitted from excited fluorophores on the filaments running vertically along wires is collectively emitted from the tips of the wires. b–d) Fluorescence micrographs of filament moving down a single wire (red dashed line). Scale bars: 2 μm.

1D transport of actin filaments

MOTILITY THROUGH HOLLOW NANOWIRE

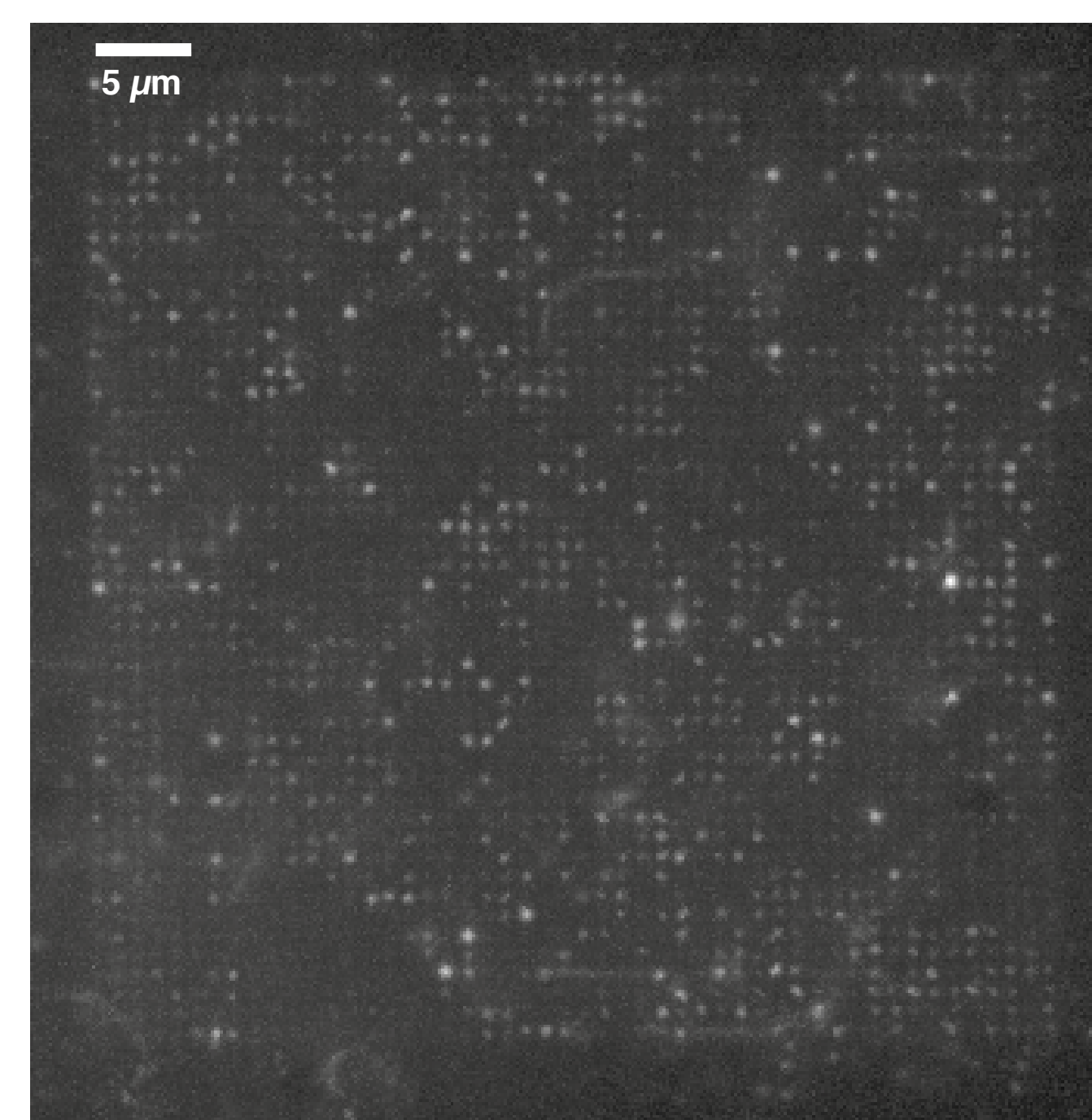
a–d) show fluorescence micrographs of filament (3.14 μm long, green arrow) being transported through a HNW. Au lines are partially demarcated by dashed lines in (a). Scale bar: 5 μm. Filaments were seen to slow down during transport through the wires. Bright square region around the wire likely due to carbon residues left behind during SEM imaging.



Conclusions

- Demonstration of 1D guidance of filaments, with 3D enclosure using HNWs.
- Enhanced detection of filaments with light guiding on vertical nanowires.
- 3D transport of filaments on vertical nanowires.
- Both techniques are useful for studies on actomyosin interactions.

Lorem Ipsum



ACKNOWLEDGEMENTS

The work presented here was carried out in close collaboration with Linnaeus University in Kalmar, Sweden. All nanofabrication was carried out in Lund Nano Lab. We acknowledge financial support from the Swedish Research Council and from the European Union Seventh Framework Programme (FP7/2007–2011) under grant agreement n° 228971 (Molecular Motors-based Nano Devices – MONAD) and n° 613044 (ABACUS) and NanoLund.

REFERENCES

- 1) M. Lard, ten Siethoff, L., Generosi, J., Månsson, A., Linke, H., Nano Lett., 2014, 14(6).
- 2) L. ten Siethoff, Lard, M., Generosi, J., Andersson, H. S., Linke, H., Månsson, A., Nano Lett. 2014, 14(2).
- 3) H. Persson et al., Nano Res. 2012, 5(190).
- 4) M. Persson et al., Langmuir 2010, 26(12).



Filaments can be muscle sarcomere or transported horizontally above, vertically along nanowires and on the substrate.

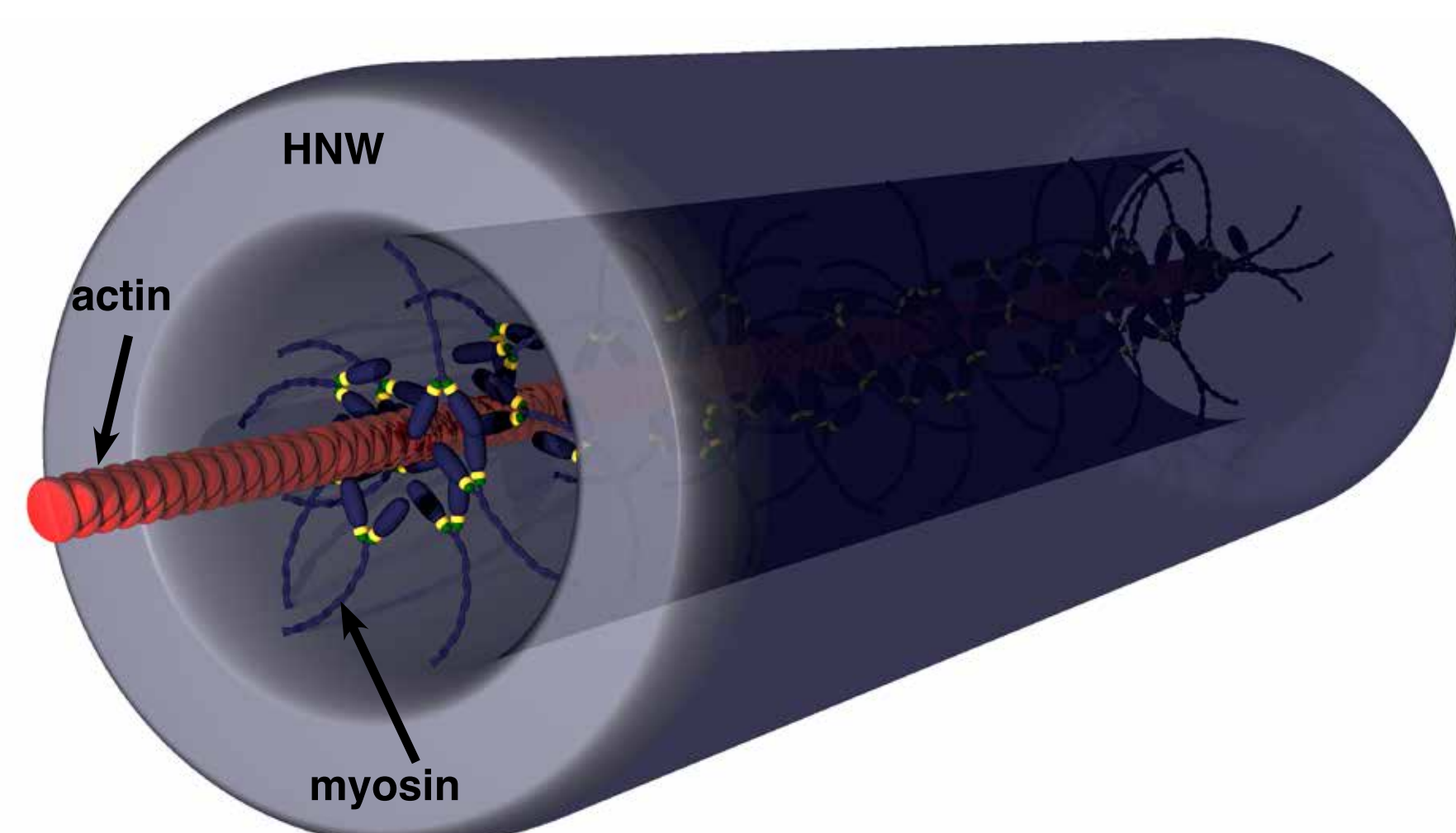
MERCY LARD^{1,2}, ALF MÅNSSON³, ANDERS MIKKELSEN^{1,4}, HEINER LINKE^{1,2}
VIVIANNE ANDERSEN^{1,2}, PILO MIKKELSEN^{1,4}, ALF FRÅNSSON³, HEINZ GINKEY^{1,2}MERCY LARD^{1,2}

1. NanoLund, Lund University, Sweden, 2. Solid State Physics, Lund University, Sweden,
3. Department of Chemistry and Biomedical Sciences, Linnaeus University, Kalmar, Sweden, 4. Synchrotron Radiation Research, Lund University, Sweden

Biomolecular motors offer directed transport, and can potentially replace pump-driven nanofluidics. However, in existing systems, transportation is limited to the two-dimensional plane. Here we demonstrate myosin-driven transport of actin filaments through hollow oxide nanotubes, with 80 nm inner diameters¹. We also show light guiding of labeled filaments moving vertically

along arrays of nanowires with 150–200 nm outer diameter and several micrometer lengths². These systems enable 3D actomyosin interaction, for example, in lab-on-a-chip systems useful for scaffolding in bottom-up assembly of muscle proteins into 3D ordered contractile units, mimicking the muscle sarcomere or in biosensing, respectively.

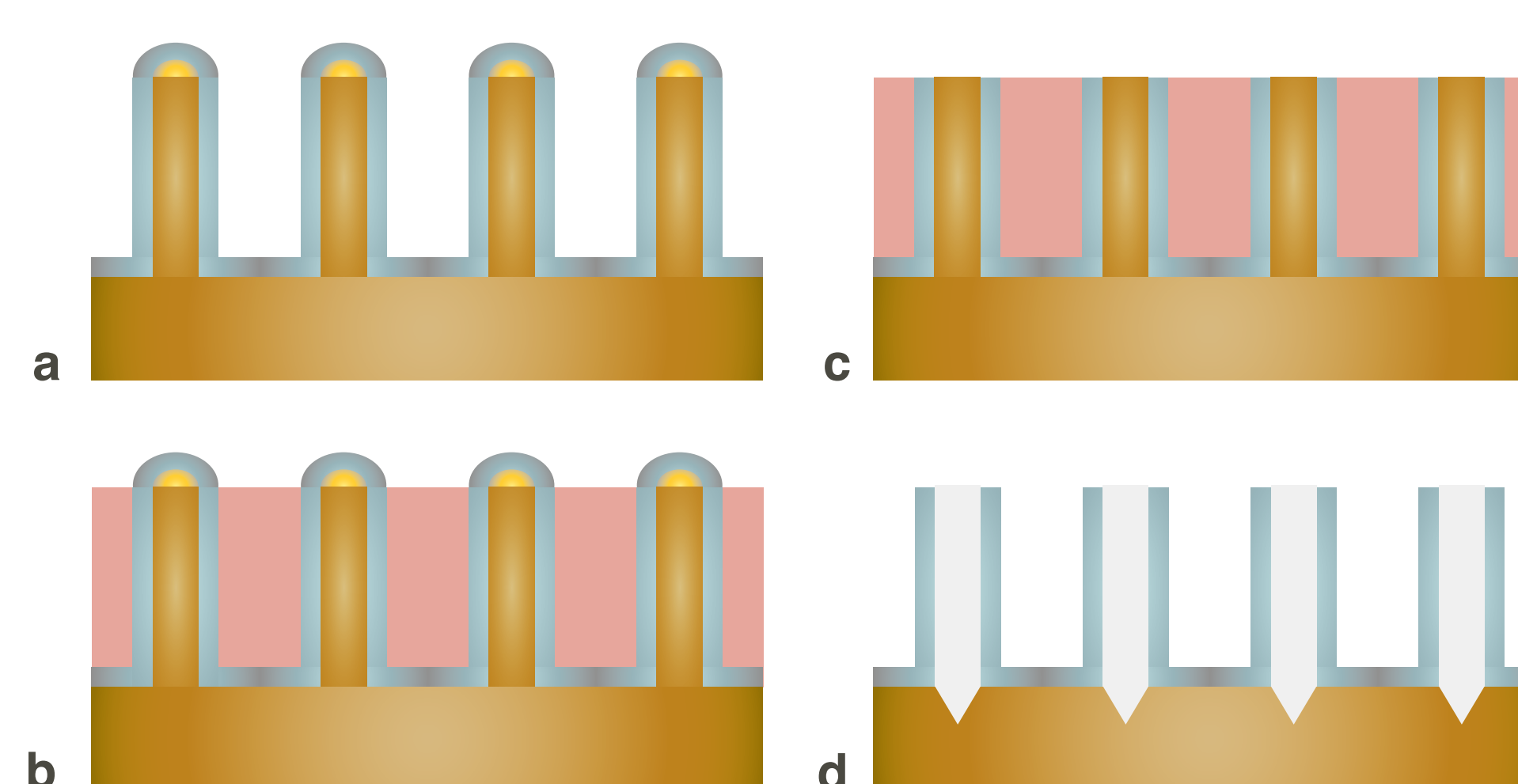
Transport of molecular motors



SCHEMATIC OF TRANSPORT

GaP nanowires are coated with 60 nm of Al₂O₃. The GaP core is etched away leaving behind HNWs (inner diameter 80 nm)³. Myosin molecules bound to the inner surface extending out about 40 nm⁴, transport actin filaments (diameter 10 nm) through the wire.

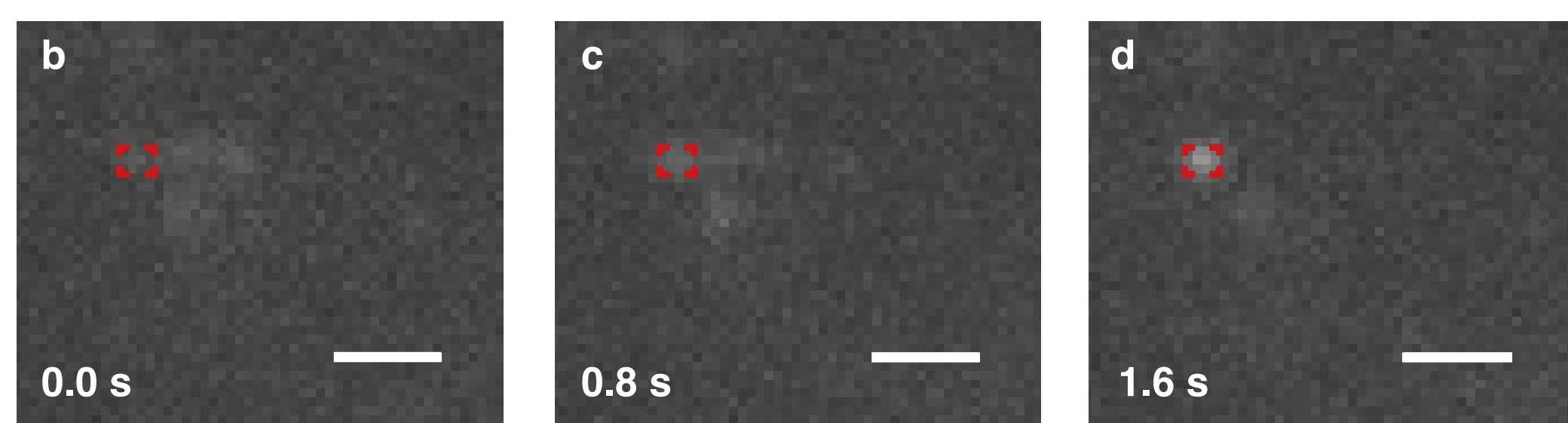
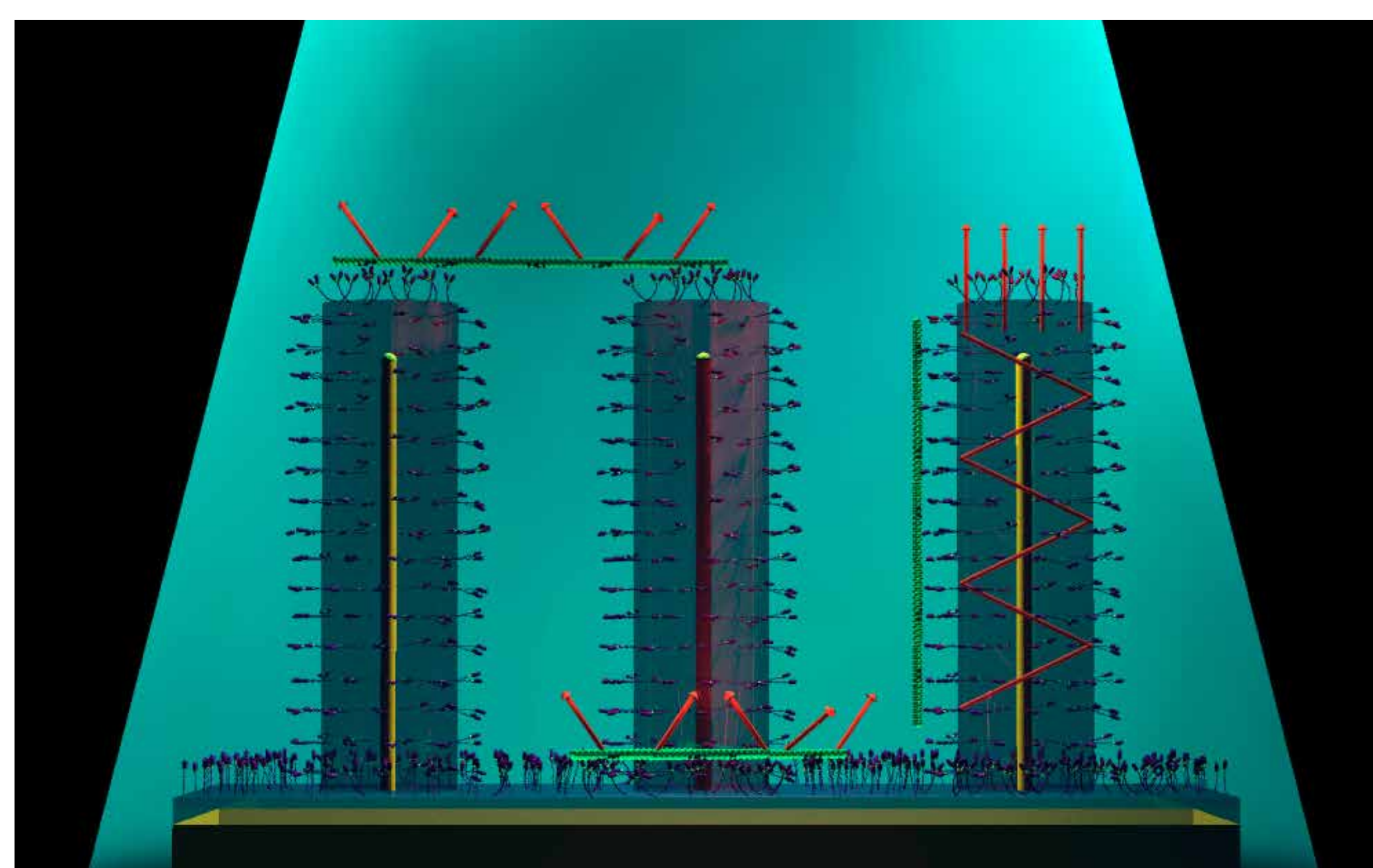
Hollow nanowire fabrication



HNW FABRICATION STEPS

a) GaP nanowires used as a template for deposition of the Al₂O₃ shell formed by atomic layer deposition. b) Coated nanowires embedded in resist tips exposed. c) Etching with argon plasma. d) Oxygen plasma etching removes resist, finally the GaP core is removed by wet etching.

Light guiding with nanowires

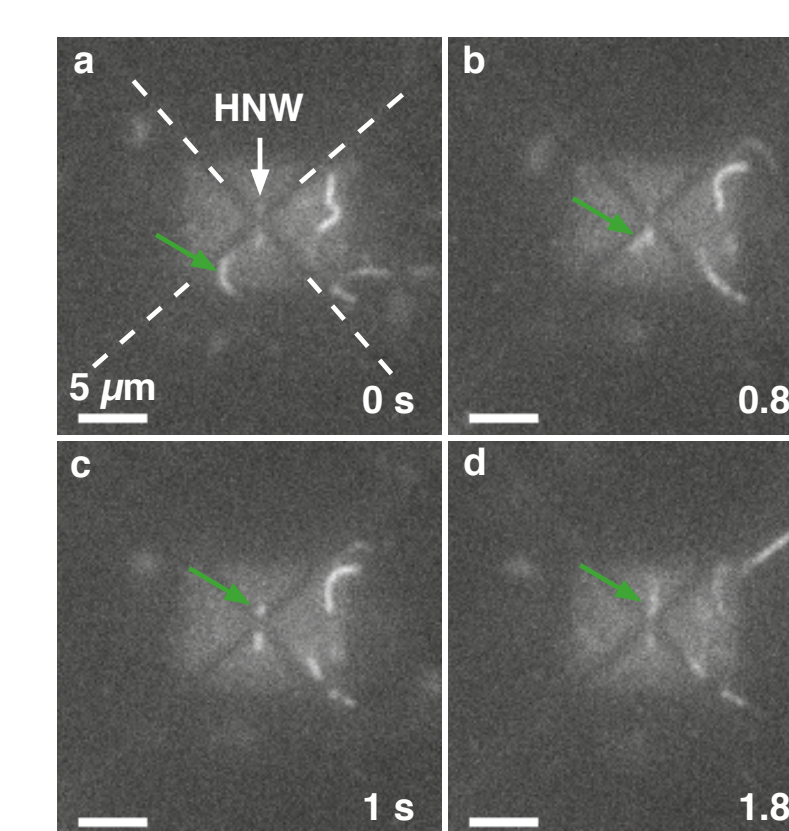


Light guiding schematic and results. a) Filaments can be transported horizontally above, vertically along nanowires and on the substrate. Light emitted from excited fluorophores on the filaments running vertically along wires is collectively emitted from the tips of the wires. b–d) Fluorescence micrographs of filament moving down a single wire (red dashed line). Scale bars: 2 μm.

1D transport of actin filaments

MOTILITY THROUGH HOLLOW NANOWIRE

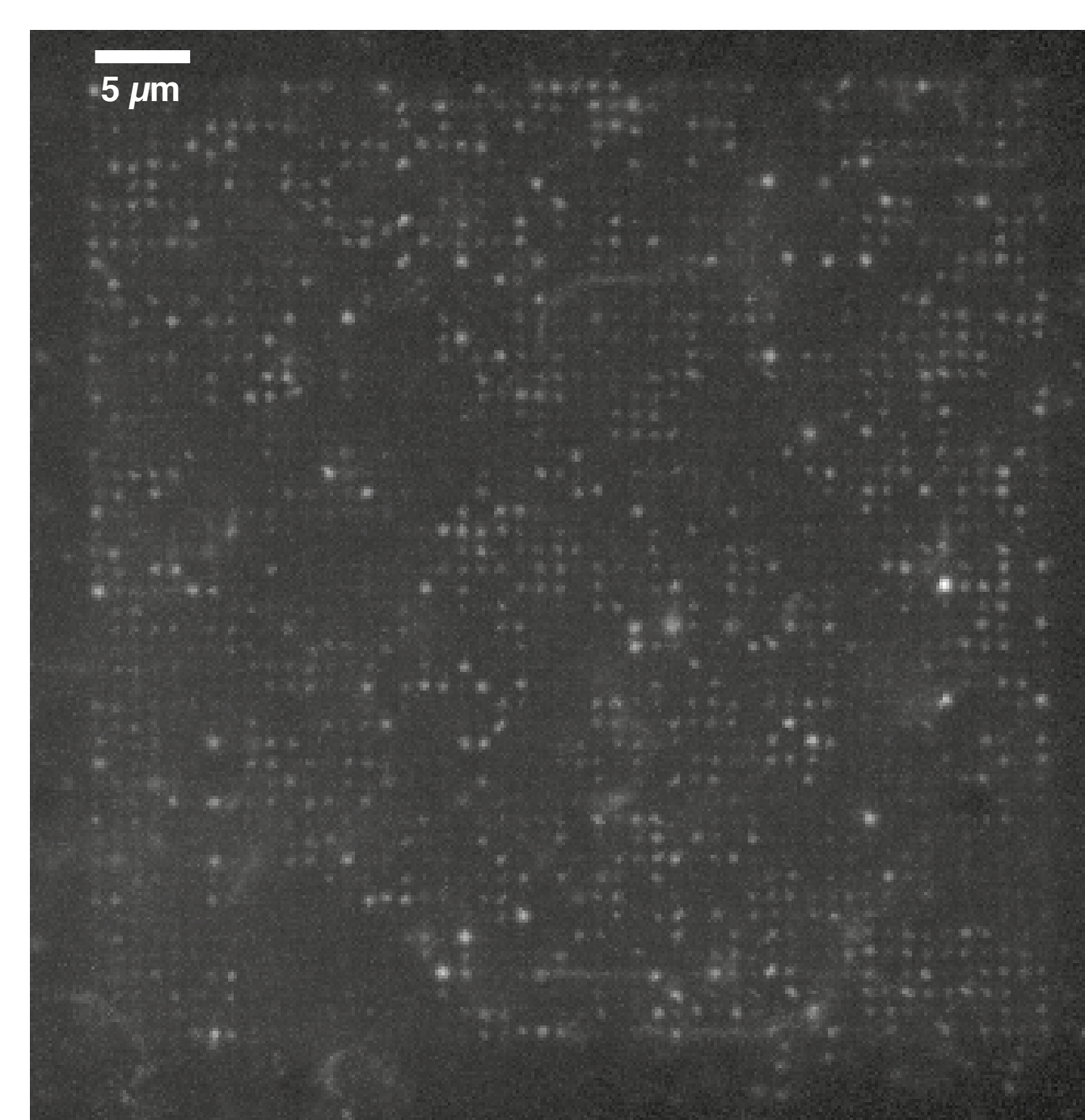
a–d) show fluorescence micrographs of filament (3.14 μm long, green arrow) being transported through a HNW. Au lines are partially demarcated by dashed lines in (a). Scale bar: 5 μm. Filaments were seen to slow down during transport through the wires. Bright square region around the wire likely due to carbon residues left behind during SEM imaging.



Conclusions

- Demonstration of 1D guidance of filaments, with 3D enclosure using HNWs.
- Enhanced detection of filaments with light guiding on vertical nanowires.
- 3D transport of filaments on vertical nanowires.
- Both techniques are useful for studies on actomyosin interactions.

Lorem Ipsum



ACKNOWLEDGEMENTS

The work presented here was carried out in close collaboration with Linnaeus University in Kalmar, Sweden. All nanofabrication was carried out in Lund Nano Lab. We acknowledge financial support from the Swedish Research Council and from the European Union Seventh Framework Programme (FP7/2007–2011) under grant agreement n° 228971 (Molecular Motors-based Nano Devices – MONAD) and n° 613044 (ABACUS) and NanoLund.

REFERENCES

- 1) M. Lard, ten Siethoff, L., Generosi, J., Månsson, A., Linke, H., Nano Lett., 2014, 14(6).
- 2) L. ten Siethoff, Lard, M., Generosi, J., Andersson, H. S., Linke, H., Månsson, A., Nano Lett. 2014, 14(2).
- 3) H. Persson et al., Nano Res. 2012, 5(190).
- 4) M. Persson et al., Langmuir 2010, 26(12).

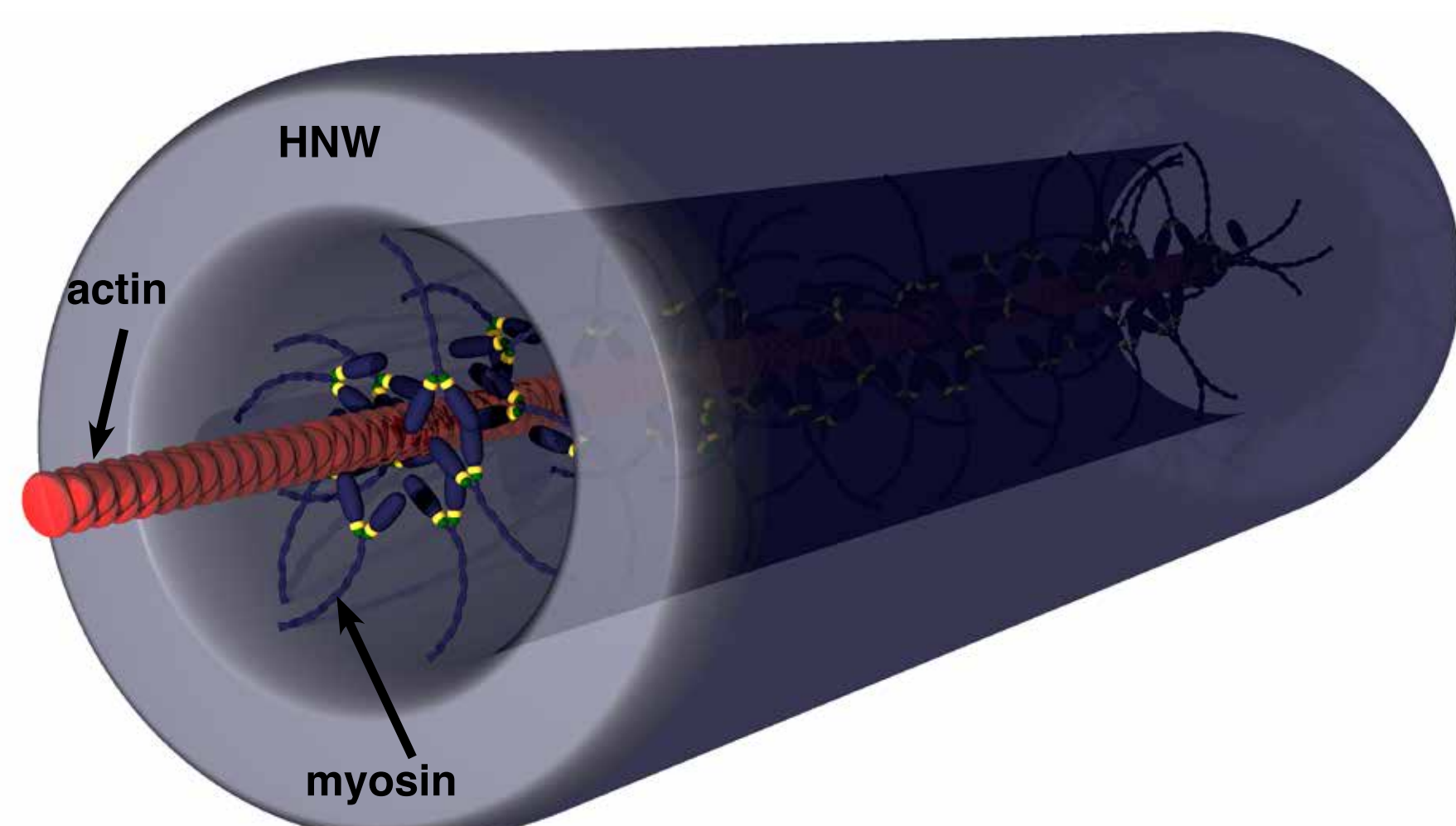
MERCY LARD^{1,2}, ALF MÅNSSON³, ANDERS MIKKELSEN^{1,4}, HEINER LINKE^{1,2}

1. NanoLund, Lund University, Sweden, 2. Solid State Physics, Lund University, Sweden,
3. Department of Chemistry and Biomedical Sciences, Linnaeus University, Kalmar, Sweden, 4. Synchrotron Radiation Research, Lund University, Sweden

Biomolecular motors offer directed transport, and can potentially replace pump-driven nanofluidics. However, in existing systems, transportation is limited to the two-dimensional plane. Here we demonstrate myosin-driven transport of actin filaments through hollow oxide nanotubes, with 80 nm inner diameters¹. We also show light guiding of labeled filaments moving vertically

along arrays of nanowires with 150–200 nm outer diameter and several micrometer lengths². These systems enable 3D actomyosin interaction, for example, in lab-on-a-chip systems useful for scaffolding in bottom-up assembly of muscle proteins into 3D ordered contractile units, mimicking the muscle sarcomere or in biosensing, respectively.

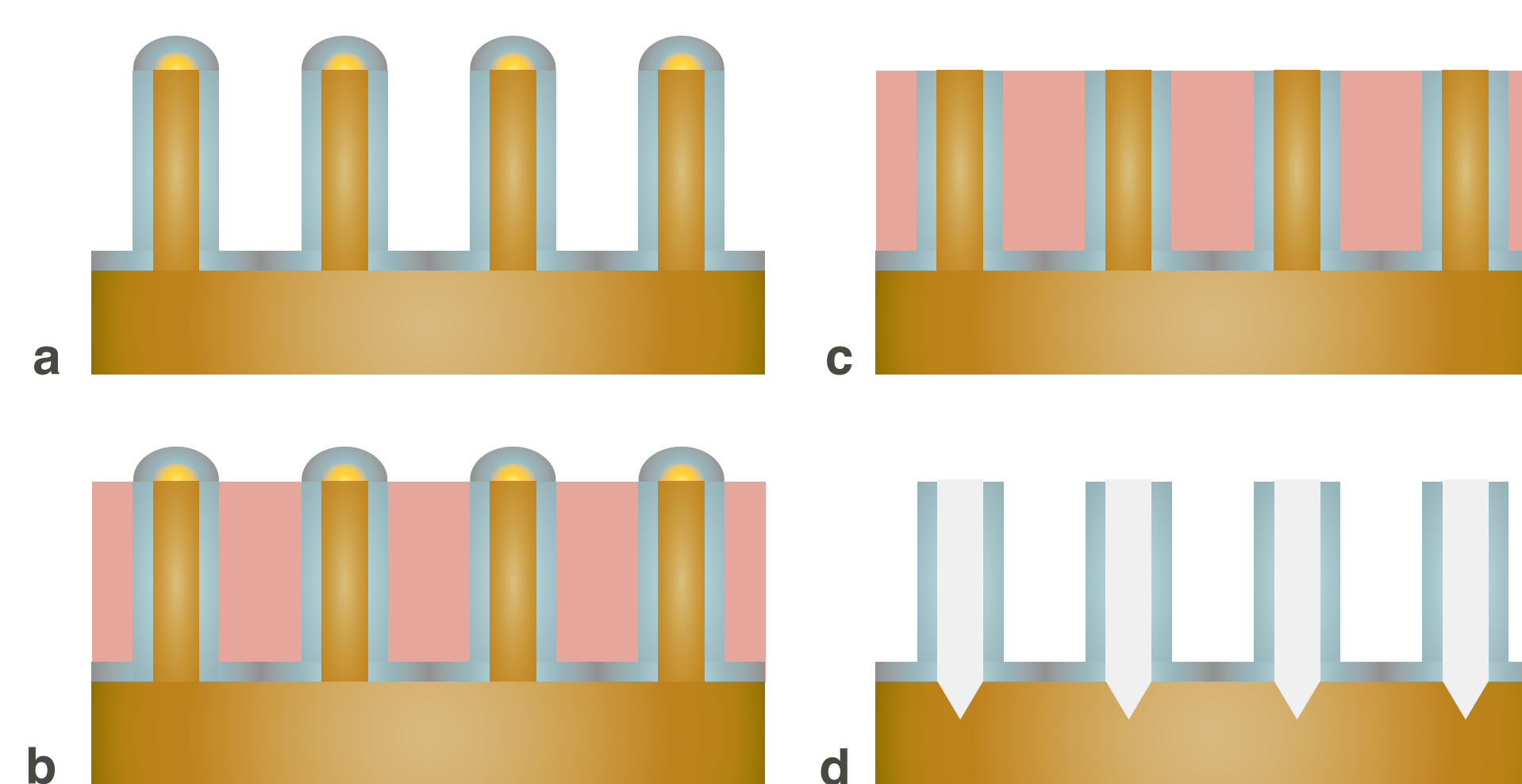
Transport of molecular motors



SCHEMATIC OF TRANSPORT

GaP nanowires are coated with 60 nm of Al₂O₃. The GaP core is etched away leaving behind HNWs (inner diameter 80 nm)³. Myosin molecules bound to the inner surface extending out about 40 nm⁴, transport actin filaments (diameter 10 nm) through the wire.

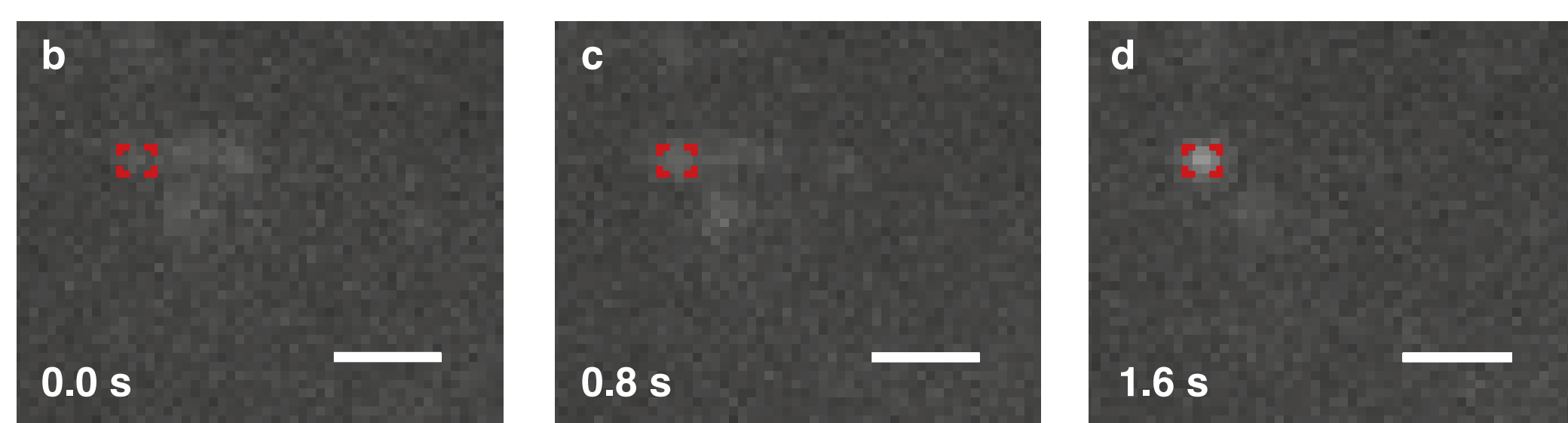
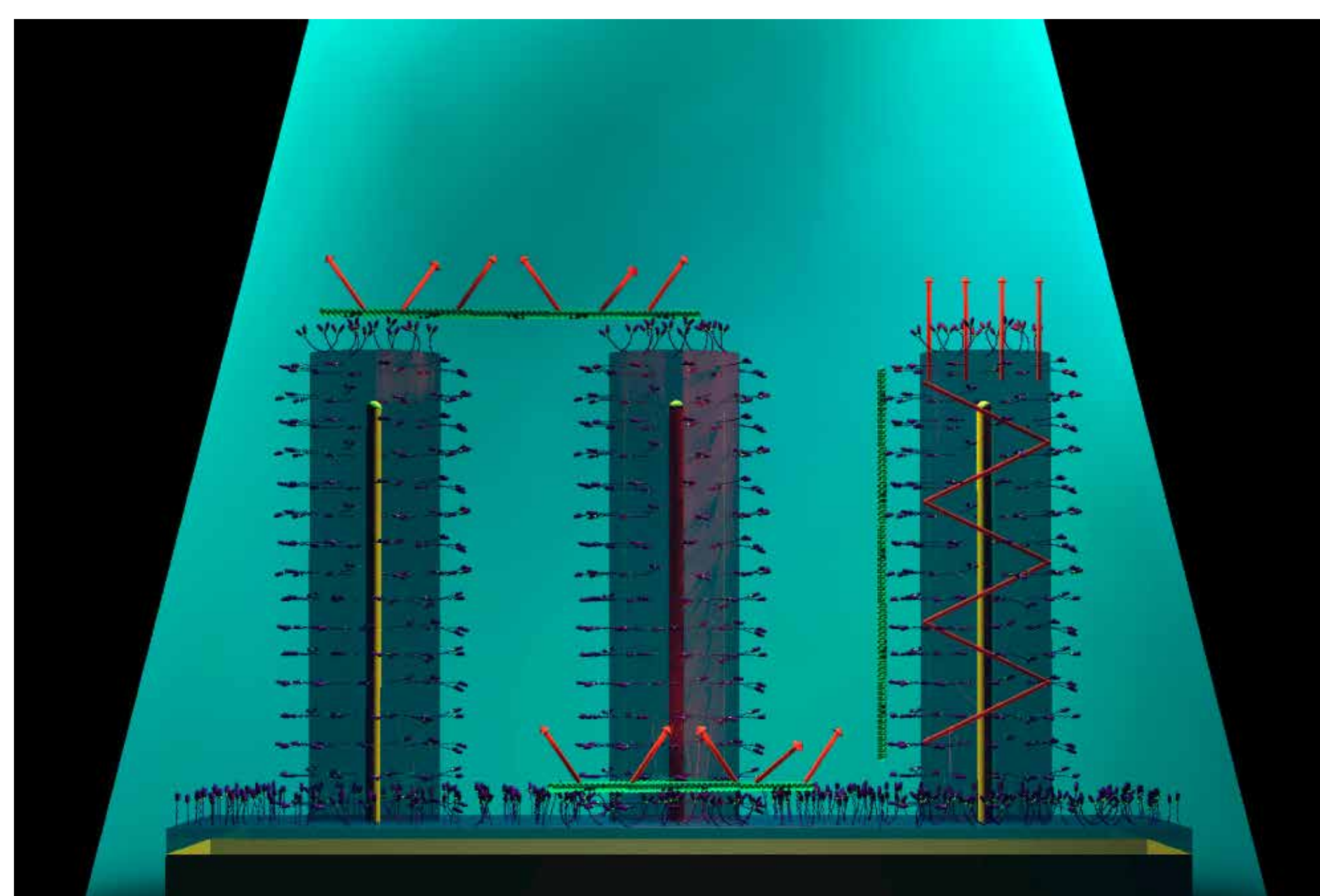
Hollow nanowire fabrication



HNW FABRICATION STEPS

a) GaP nanowires used as a template for deposition of the Al₂O₃ shell formed by atomic layer deposition. b) Coated nanowires embedded in resist tips exposed. c) Etching with argon plasma. d) Oxygen plasma etching removes resist, finally the GaP core is removed by wet etching.

Light guiding with nanowires

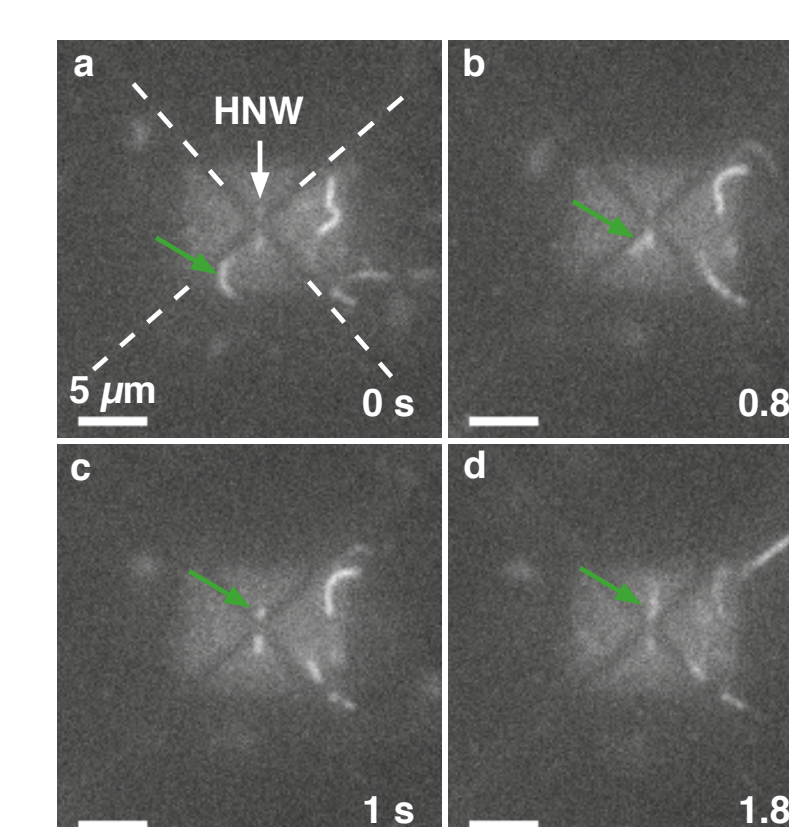


Light guiding schematic and results. a) Filaments can be transported horizontally above, vertically along nanowires and on the substrate. Light emitted from excited fluorophores on the filaments running vertically along wires is collectively emitted from the tips of the wires. b–d) Fluorescence micrographs of filament moving down a single wire (red dashed line). Scale bars: 2 μm.

1D transport of actin filaments

MOTILITY THROUGH HOLLOW NANOWIRE

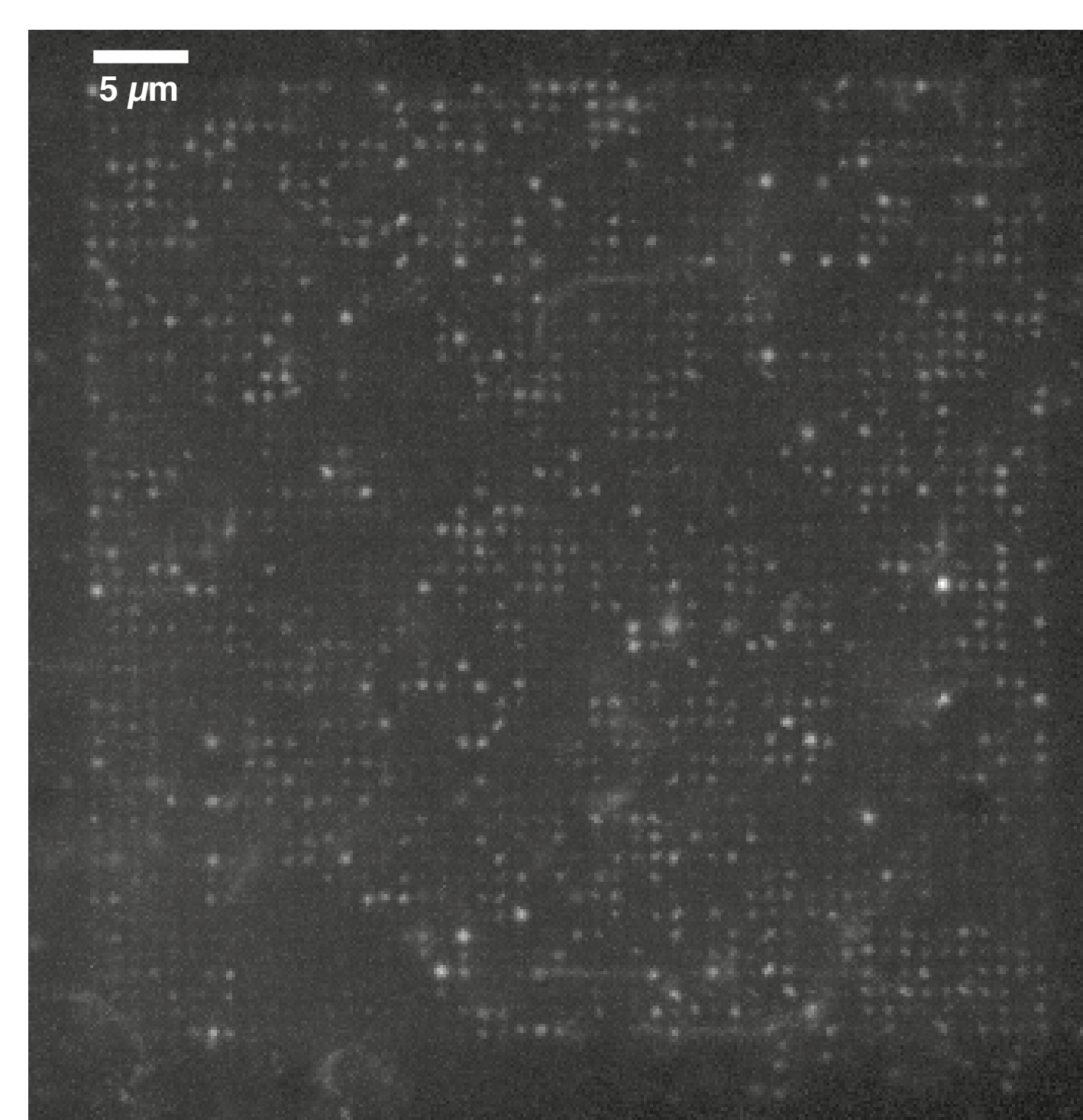
a–d) show fluorescence micrographs of filament (3.14 μm long, green arrow) being transported through a HNW. Au lines are partially demarcated by dashed lines in (a). Scale bar: 5 μm. Filaments were seen to slow down during transport through the wires. Bright square region around the wire likely due to carbon residues left behind during SEM imaging.



Conclusions

- Demonstration of 1D guidance of filaments, with 3D enclosure using HNWs.
- Enhanced detection of filaments with light guiding on vertical nanowires.
- 3D transport of filaments on vertical nanowires.
- Both techniques are useful for studies on actomyosin interactions.

Lorem Ipsum



ACKNOWLEDGEMENTS

The work presented here was carried out in close collaboration with Linnaeus University in Kalmar, Sweden. All nanofabrication was carried out in Lund Nano Lab. We acknowledge financial support from the Swedish Research Council and from the European Union Seventh Framework Programme (FP7/2007–2011) under grant agreement n° 228971 (Molecular Motors-based Nano Devices – MONAD) and n° 613044 (ABACUS) and NanoLund.

REFERENCES

- 1) M. Lard, ten Siethoff, L., Generosi, J., Månsson, A., Linke, H., Nano Lett., 2014, 14(6).
- 2) L. ten Siethoff, Lard, M., Generosi, J., Andersson, H. S., Linke, H., Månsson, A., Nano Lett. 2014, 14(2).
- 3) H. Persson et al., Nano Res. 2012, 5(190).
- 4) M. Persson et al., Langmuir 2010, 26(12).



Filaments can be muscle sarcomere or transported horizontally above, vertically along nanowires and on the substrate.

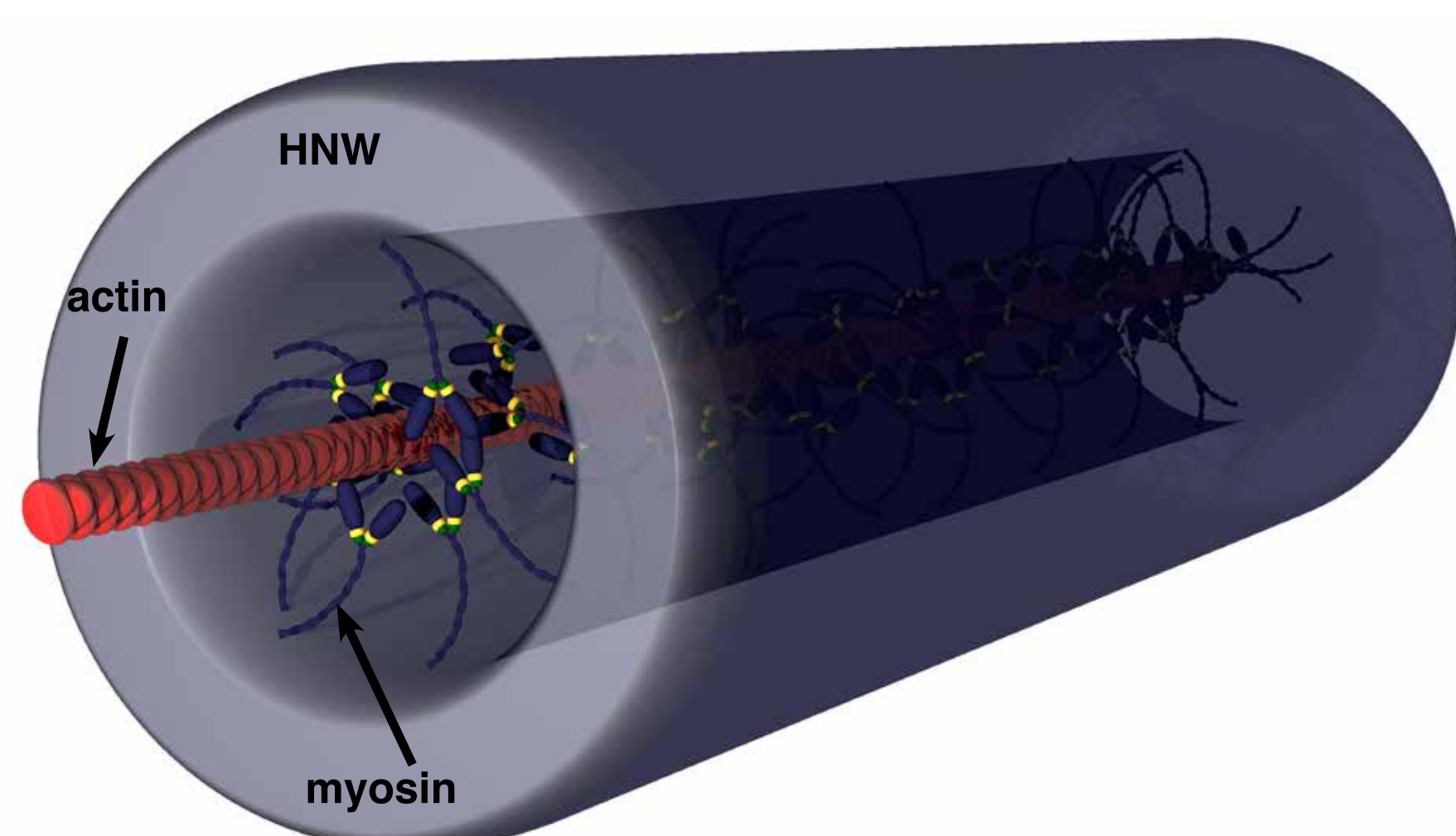
MERCY LARD^{1,2}, ALF MÅNSSON³, ANDERS MIKKELSEN^{1,4}, HEINER LINKE^{1,2}

1. NanoLund, Lund University, Sweden, 2. Solid State Physics, Lund University, Sweden,
3. Department of Chemistry and Biomedical Sciences, Linnaeus University, Kalmar, Sweden, 4. Synchrotron Radiation Research, Lund University, Sweden

Biomolecular motors offer directed transport, and can potentially replace pump-driven nanofluidics. However, in existing systems, transportation is limited to the two-dimensional plane. Here we demonstrate myosin-driven transport of actin filaments through hollow oxide nanotubes, with 80 nm inner diameters¹. We also show light guiding of labeled filaments moving vertically

along arrays of nanowires with 150–200 nm outer diameter and several micrometer lengths². These systems enable 3D actomyosin interaction, for example, in lab-on-a-chip systems useful for scaffolding in bottom-up assembly of muscle proteins into 3D ordered contractile units, mimicking the muscle sarcomere or in biosensing, respectively.

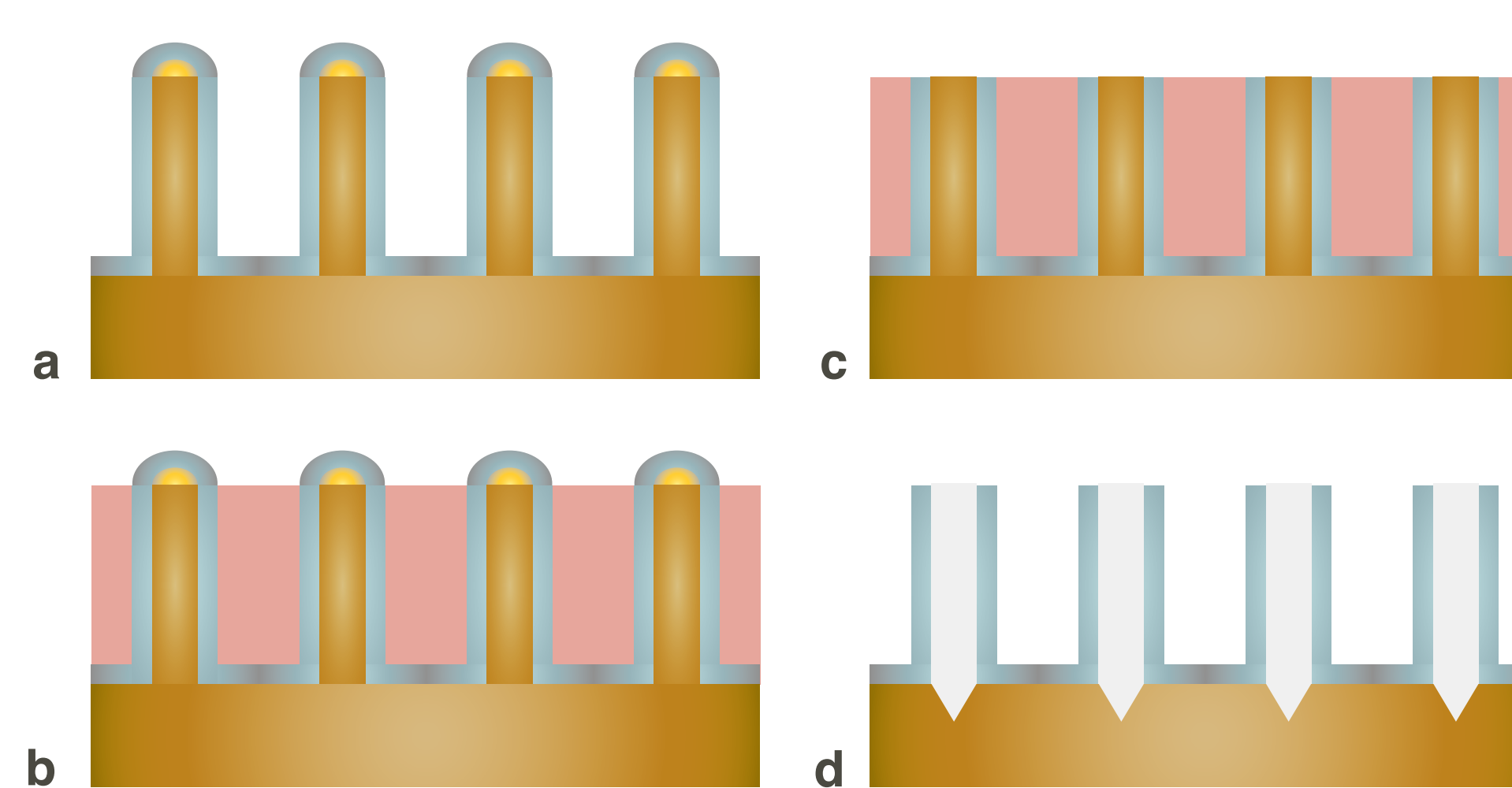
Transport of molecular motors



SCHEMATIC OF TRANSPORT

GaP nanowires are coated with 60 nm of Al₂O₃. The GaP core is etched away leaving behind HNWs (inner diameter 80 nm)³. Myosin molecules bound to the inner surface extending out about 40 nm⁴, transport actin filaments (diameter 10 nm) through the wire.

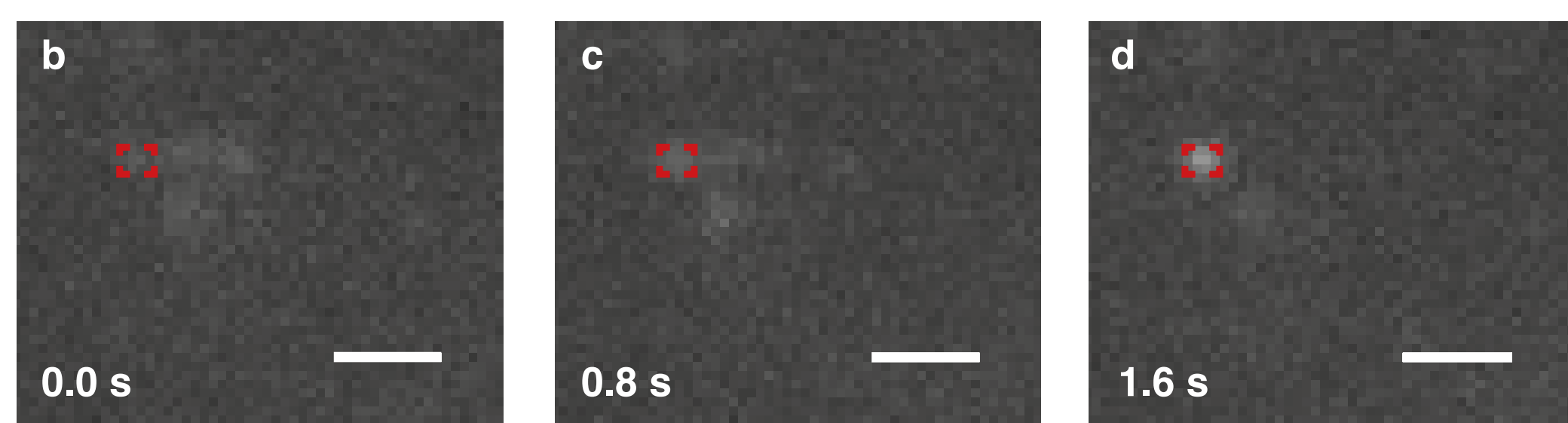
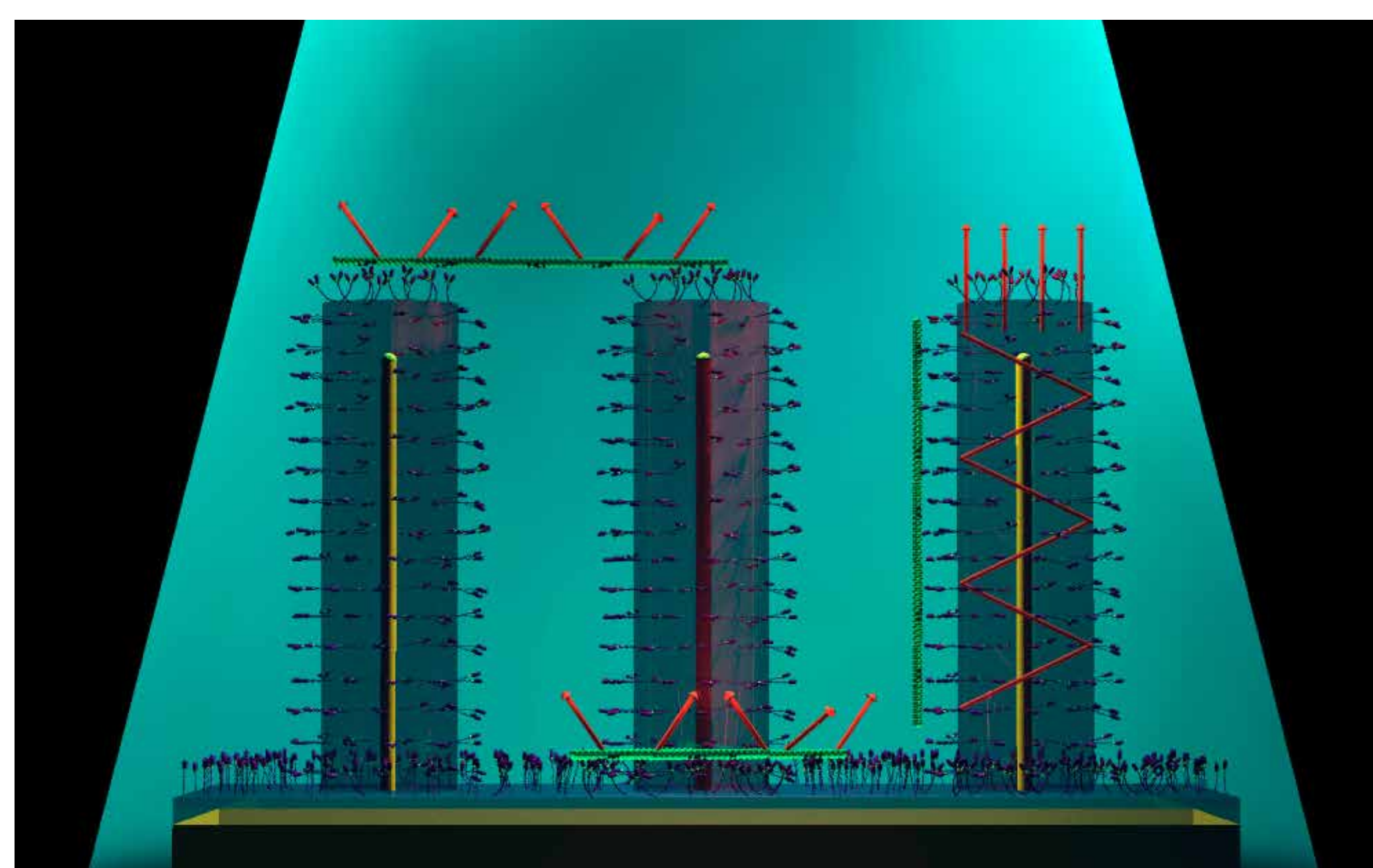
Hollow nanowire fabrication



HNW FABRICATION STEPS

a) GaP nanowires used as a template for deposition of the Al₂O₃ shell formed by atomic layer deposition. b) Coated nanowires embedded in resist tips exposed. c) Etching with argon plasma. d) Oxygen plasma etching removes resist, finally the GaP core is removed by wet etching.

Light guiding with nanowires

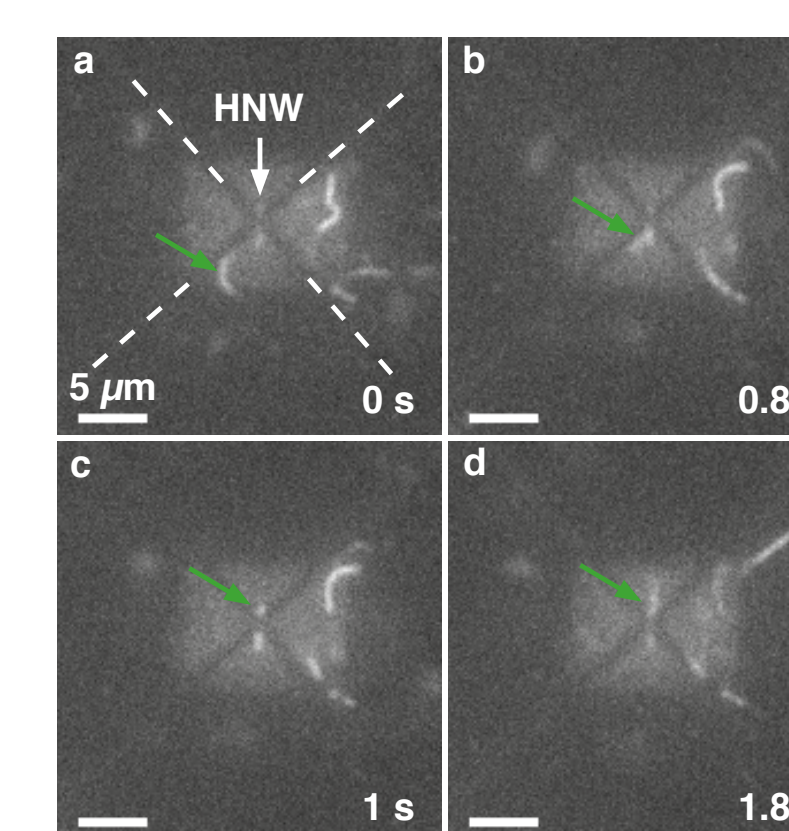


Light guiding schematic and results. a) Filaments can be transported horizontally above, vertically along nanowires and on the substrate. Light emitted from excited fluorophores on the filaments running vertically along wires is collectively emitted from the tips of the wires. b–d) Fluorescence micrographs of filament moving down a single wire (red dashed line). Scale bars: 2 μm.

1D transport of actin filaments

MOTILITY THROUGH HOLLOW NANOWIRE

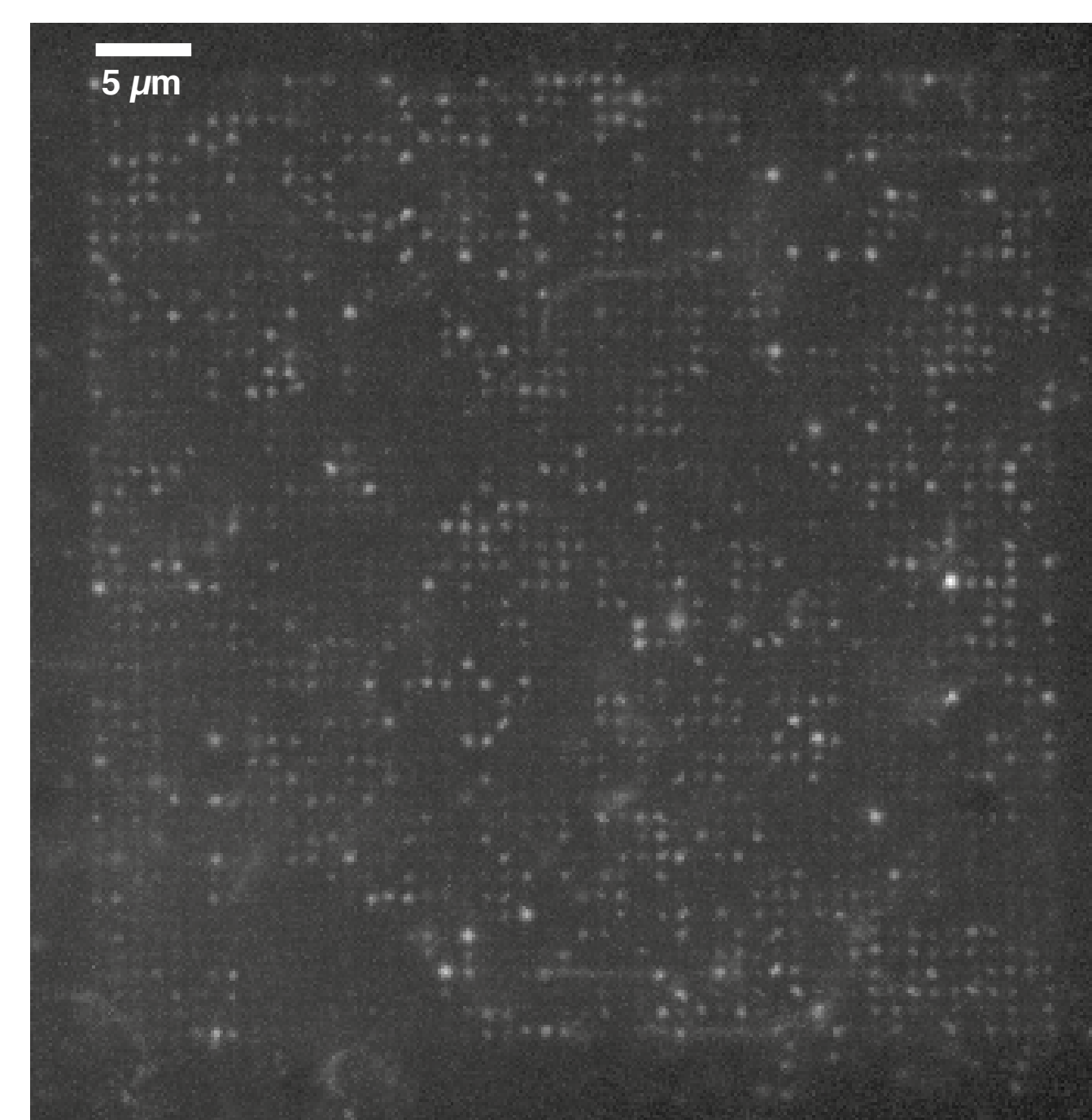
a–d) show fluorescence micrographs of filament (3.14 μm long, green arrow) being transported through a HNW. Au lines are partially demarcated by dashed lines in (a). Scale bar: 5 μm. Filaments were seen to slow down during transport through the wires. Bright square region around the wire likely due to carbon residues left behind during SEM imaging.



Conclusions

- Demonstration of 1D guidance of filaments, with 3D enclosure using HNWs.
- Enhanced detection of filaments with light guiding on vertical nanowires.
- 3D transport of filaments on vertical nanowires.
- Both techniques are useful for studies on actomyosin interactions.

Lorem Ipsum



ACKNOWLEDGEMENTS

The work presented here was carried out in close collaboration with Linnaeus University in Kalmar, Sweden. All nanofabrication was carried out in Lund Nano Lab. We acknowledge financial support from the Swedish Research Council and from the European Union Seventh Framework Programme (FP7/2007–2011) under grant agreement n° 228971 (Molecular Motors-based Nano Devices – MONAD) and n° 613044 (ABACUS) and NanoLund.

REFERENCES

- 1) M. Lard, ten Siethoff, L., Generosi, J., Månsson, A., Linke, H., Nano Lett., 2014, 14(6).
- 2) L. ten Siethoff, Lard, M., Generosi, J., Andersson, H. S., Linke, H., Månsson, A., Nano Lett. 2014, 14(2).
- 3) H. Persson et al., Nano Res. 2012, 5(190).
- 4) M. Persson et al., Langmuir 2010, 26(12).